

SEATTLE NINE DEPARTURE

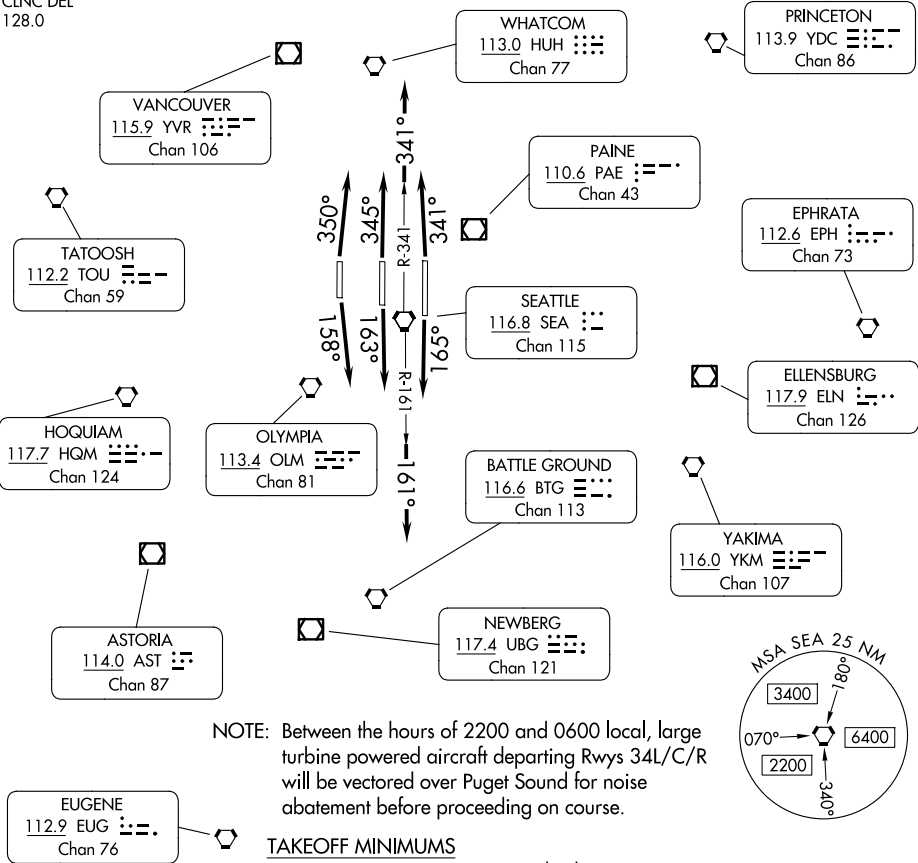
AL-582 (FAA)

SEATTLE-TACOMA INTL (SEA)
SEATTLE, WASHINGTON

SEATTLE DEP CON
119.2 284.7
D-ATIS
118.0
CLNC DEL
128.0

TOP ALTITUDE:
ASSIGNED BY ATC

RADAR required.



NOTE: Chart not to scale.

DEPARTURE ROUTE DESCRIPTION

TAKEOFF RUNWAY 16L: Climb on heading 165° and on SEA R-161, thence. . .
TAKEOFF RUNWAY 16C: Climb on heading 163° and on SEA R-161, thence. . .
TAKEOFF RUNWAY 16R: Climb on heading 158° and on SEA R-161, thence. . .
TAKEOFF RUNWAY 34L: Climb on heading 350° and on SEA R-341, thence. . .
TAKEOFF RUNWAY 34C: Climb on heading 345° and on SEA R-341, thence. . .
TAKEOFF RUNWAY 34R: Climb on heading 341° and on SEA R-341, thence. . .
. . . expect RADAR vectors to assigned route. Maintain ATC assigned altitude, expect requested altitude 15 NM after SEA.

SEATTLE NINE DEPARTURE