

APP CRS	Rwy Idg	8500
164°	TDZE	415
	Apt Elev	433

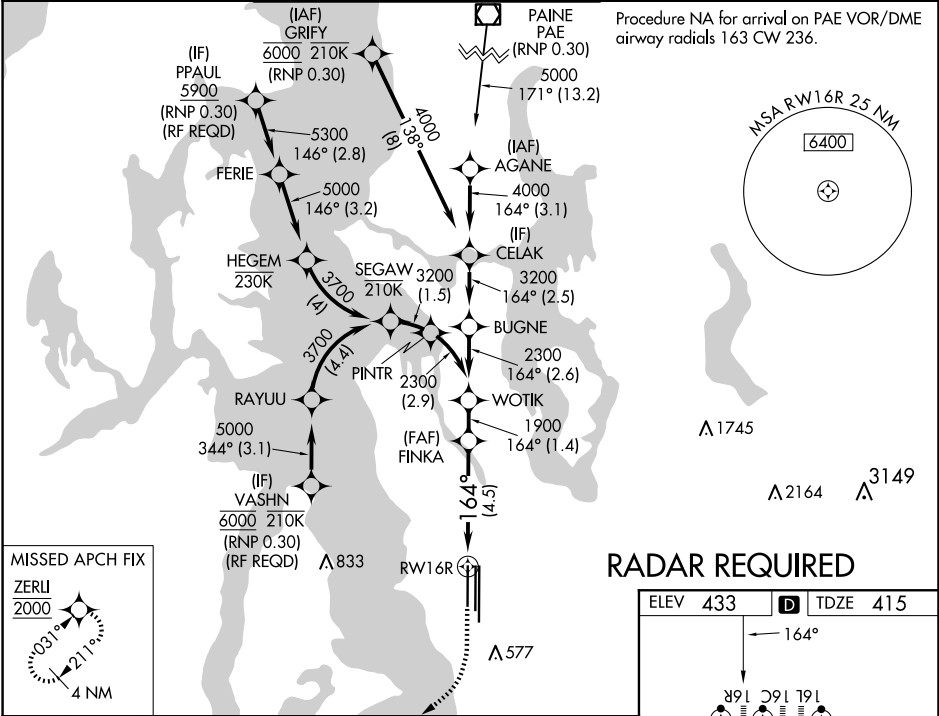
RNAV (RNP) Z RWY 16R
SEATTLE-TACOMA INTL (SEA)



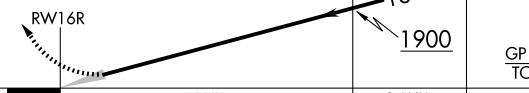
▼ For uncompensated Baro-VNAV systems, procedure NA below -6°C (22°F) or above 54°C (130°F). Simultaneous approach authorized with Rwy 16L, except for arrivals at PPAUL and VASHN. GPS required. Use of FD or AP providing RNAV track guidance required during simultaneous operations. For inop ALS, increase RNP 0.15 all Cats visibility to RVR 5800, increase RNP 0.30 all Cats visibility to 1½ SM.

ALSF-2

MISSED APPROACH: Climb to 900 then climbing right direct ZERLI to cross ZERLI at 2000 and hold.

D-ATIS	SEATTLE APP CON	SEATTLE TOWER	GND CON	CLNC DEL	CPDLC
118.0	133.65 273.45	119.9 239.3 (Rwys 16L, 16C, 34C, 34R) 120.95 239.3 (Rwys 16R, 34L)	121.7	128.0	



900 ↑		ZERLI  <u>2000</u>	VGSI and RNAV glidepath not coincident (VGSI Angle 3.00/TCH 69).		
See planview for multiple IF locations.			FINKA 1900	WOTIK <u>2300</u>	
					
			4.5 NM	1.4 NM	GP 3.00° TCH 55
CATEGORY	A		B	C	D
RNP 0.15 DA			770/34	355 (400-5%)	
RNP 0.30 DA			854/50	439 (500-1)	
AUTHORIZATION REQUIRED					

