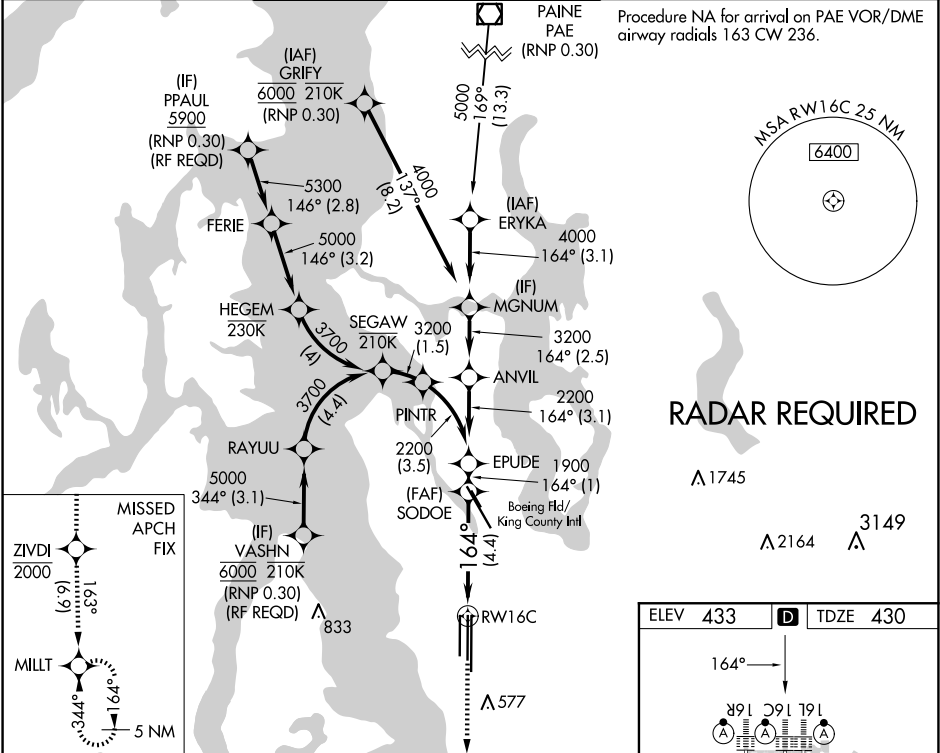


APP CRS	Rwy Idg	9426
164°	TDZE	430
	Apt Elev	433

RNAV (RNP) Z RWY 16C  
SEATTLE-TACOMA INTL (SEA)

<p>For uncompensated Baro-VNAV systems, procedure NA below -6°C (22°F) or above 54°C (130°F). GPS required. See additional requirements on adjacent information page. For inop ALS, increase RNP 0.12 all Cats visibility to RVR 5200, and increase RNP 0.30 all Cats visibility to 1 3/8 SM.</p>			MISSED APPROACH: Climb direct ZIVDI to cross ZIVDI at or below 2000, then climb to 5000 on track 163° to MILLT and hold, continue climb-in-hold to 5000.	
D-ATIS	SEATTLE APP CON	SEATTLE TOWER	GND CON	CLNC DEL
118.0	133.65 273.45	119.9 239.3 (Rwys 16L, 16C, 34C, 34R) 120.95 239.3 (Rwys 16R, 34L)	121.7	128.0
				CPDLC



↑

ZIVDI

2000

↑

5000

tr 163°

✧

MILLT

VGSI and RNAV glidepath not coincident

(VGSI Angle 3.00/TCH 71).

SODOE

1900

EPUDE

2200

See Planview for multiple IF locations.

RW16C

1900

164°

GP 3.00°

TCH 57

4.4 NM

1 NM

CATEGORY	A	B	C	D
RNP 0.12 DA		758/29	328 (400-5%)	
RNP 0.30 DA		834/43	404 (500-7%)	

AUTHORIZATION REQUIRED

