

LOC/DME F-SNQ	APP CRS	Rwy Idg	11901
110.3	164°	TDZE	432
Chan 40		Apt Elev	432

ILS or LOC RWY 16L

SEATTLE-TACOMA INTL (SEA)

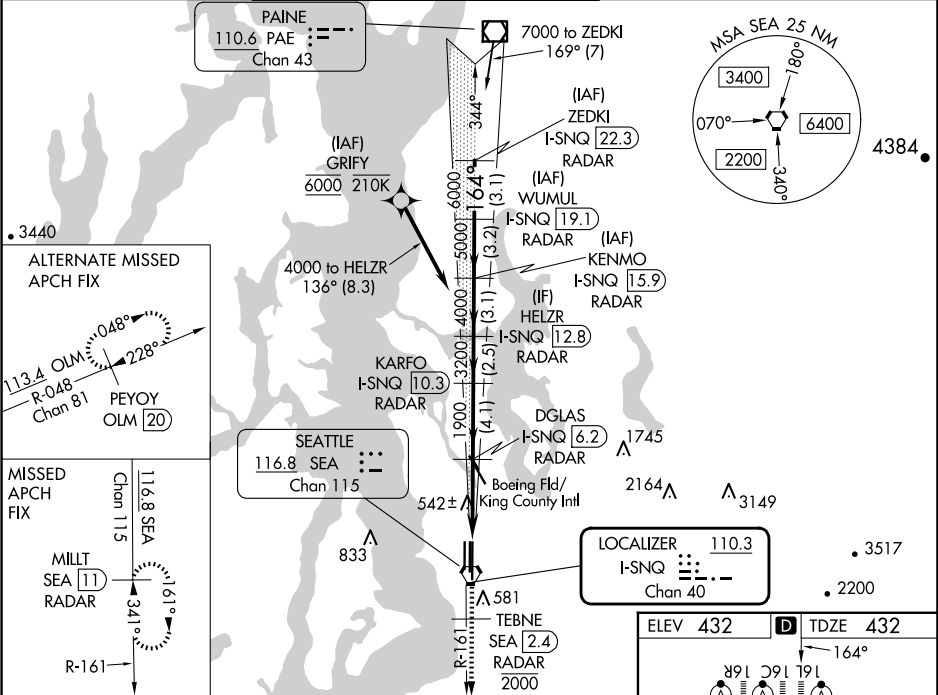
DME or RADAR required. RNP APCH-GPS, from GRIFY.

ALSIF-2

MISSED APPROACH: Climb to 900 on heading 165° then on SEA VORTAC R-161 to cross TEBNE/SEA 2.4 DME/RADAR at or below 2000 then climb to 5000 on SEA VORTAC R-161 to MILIT/SEA 11 DME/RADAR and hold, continue climb-in-hold to 5000.

Simultaneous approach authorized.

D-ATIS	SEATTLE APP CON	SEATTLE TOWER	GND CON	CINC DEL	CPDLC
118.0	133.65 273.45	119.9 239.3 (Rwys 16L, 16C, 34C, 34R) 120.95 239.3 (Rwys 16R, 34L)	121.7	128.0	



900	SEA R-161	TEBNE SEA 2.4	5000	MILIT SEA 11	VGSI and ILS glidepath not coincident (VGSI Angle 3.00/TCH 76).	ZEDKI I-SNQ
165°		2000				I-SNQ 22.3
						RADAR
						WUMUL I-SNQ
						I-SNQ 19.1
						RADAR
						KENMO I-SNQ
						I-SNQ 15.9
						RADAR
						HELZR I-SNQ
						I-SNQ 12.8
						RADAR
						DGLAS I-SNQ
						I-SNQ 6.2
						RADAR
						KARFO I-SNQ
						I-SNQ 10.3
						RADAR
						I-SNQ 2.9
						RADAR
						I-SNQ 1.8
						RADAR
						GS 3.00°
						TCH 56
						1.2 NM
						3.3 NM
						4.1 NM
						2.5 NM
						3.1 NM
						3.2 NM
						3.1 NM
CATEGORY	A	B	C	D		
S-ILS 16L	697/20 265 (300-½)	632/18	200 (200-½)			
S-LOC 16L	880/24	448 (500-½)	880/45	448 (500-¾)		
CIRCLING	1000-1	568 (600-1)	1000-1½	568 (600-2)		

