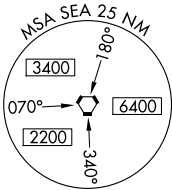


ILS or LOC RWY 16C
SEATTLE-TACOMA INTL (SEA)

MISSED APPROACH: Climb on heading 160° and SEA VORTAC R-161 to cross TEBNE/SEA 2.4 DME/RADAR at or below 2000, then climb to 5000 on SEA VORTAC R-161 to MILTT/SEA 11 DME/RADAR and hold, continue climb-in-hold to 5000.

A

CPDLC

NW-1, 10 JUL 2025 to 07 AUG 2025

NW-1. 10 JUL 2025 to 07 AUG 2025

