

LOC/DME I-CJL	APP CRS	Rwy Idg	8500
110.75	164°	TDZE	415
Chan 44(Y)		Apt Elev	432

ILS RWY 16R (SA CAT I)  
SEATTLE-TACOMA INTL (SEA)

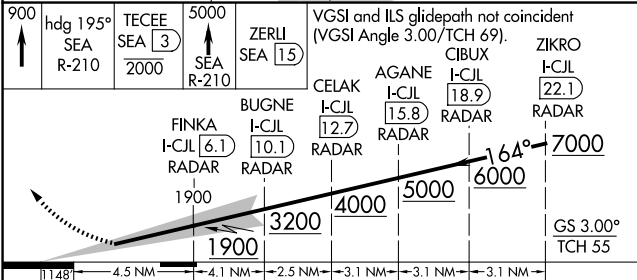
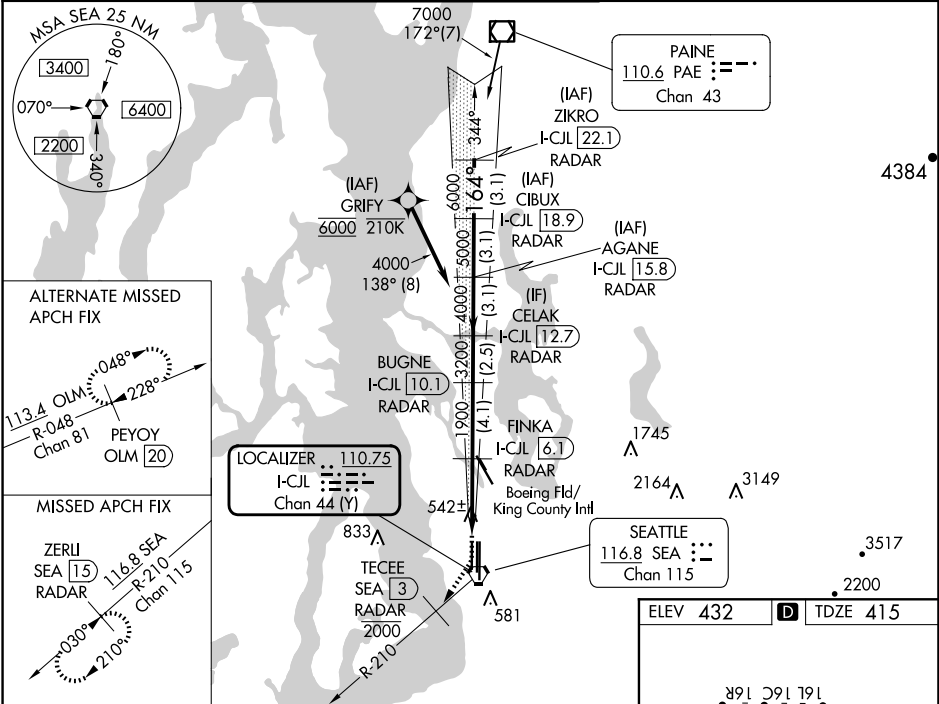
DME or RADAR required. From GRIFY: RNAV 1-GPS required.

Simultaneous approach authorized with Rwy 16L and 16C. Simultaneous operations require use of vertical guidance, maintain last assigned altitude until established on glideslope. Requires specific OPSPEC, MSPEC or LOA approval and use of HUD to DH.

ALSF-2

MISSED APPROACH: Climb to 900 then climb on heading 195° and on SEA VORTAC R-210 to cross TECEE/SEA 3 DME/RADAR at or below 2000 then climb to 5000 on SEA VORTAC R-210 to ZERLI/SEA 15 DME/RADAR and hold, continue climb-in-hold to 5000.

D-ATIS	SEATTLE APP CON	SEATTLE TOWER	GND CON	CLNC DEL	CPDLC
118.0	133.65 273.45	119.9 239.3 (Rwys 16L, 16C, 34C, 34R) 120.95 239.3 (Rwys 16R, 34L)	121.7	128.0	



CATEGORY	A	B	C	D
S-ILS 16R	RA 176/14 150 DA 565			
SA CAT I ILS-SPECIAL AIRCREW & AIRCRAFT CERTIFICATION REQUIRED				

