

LOC/DME I-CJL 110.75 Chan 44 (Y)	APP CRS 164°	Rwy Idg TDZE Apt Elev	8500 415 432
------------------------------------------------------	------------------------	-----------------------------	-----------------------------------------

ILS RWY 16R (CAT II & III)
SEATTLE-TACOMA INTL (SEA)

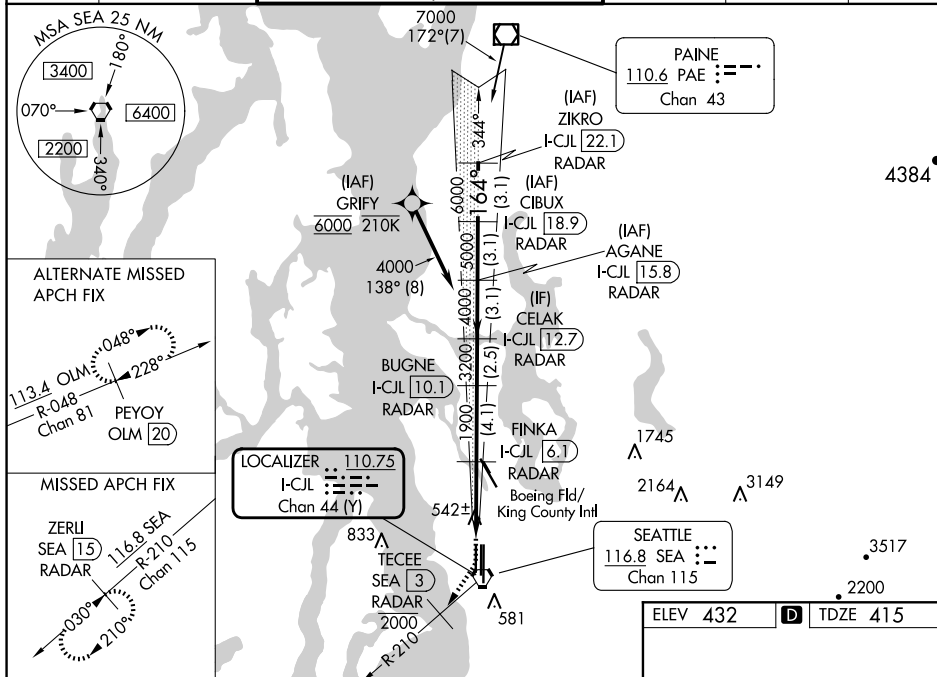
DME or RADAR required. From GRIFY: RNAV 1-GPS required.

T Simultaneous approach authorized with Rwy 16L and 16C. Simultaneous operations require use of vertical guidance, maintain last assigned altitude until established on glide slope. Cat II: RVR 1000 authorized with specific OPSPEC, MSPEC or LOA approval and use of Autoland or HUD to touchdown.

ALSF-2

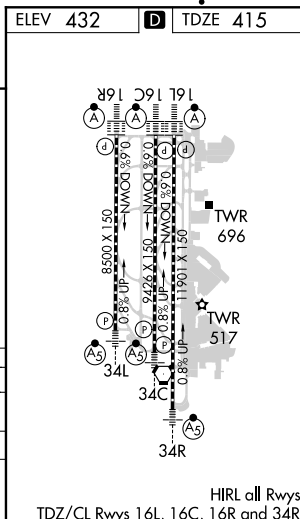
MISSED APPROACH: Climb to 900 then climb on heading 195° and on SEA VORTAC R-210 to cross TEEC/SEA 3 DME/RADAR at or below 2000 then climb to 5000 on SEA VORTAC R-210 to ZERU/SEA 15 DME/RADAR and hold, continue climb-in-hold to 5000.

D-ATIS 118.0	SEATTLE APP CON 133.65 273.45	SEATTLE TOWER 119.9 239.3 (Rwys 16L, 16C, 34C, 34R) 120.95 239.3 (Rwys 16R, 34L)	GND CON 121.7	CLNC DEL 128.0	CPDLC
------------------------	-----------------------------------------	------------------------------------------------------------------------------------------------------	-------------------------	--------------------------	-------



900 ↑ hdg 195° SEA R-210		TECEE SEA 3 2000		5000 ↑ SEA R-210		ZERLI SEA 15		VGSI and ILS glidepath not coincident (VGSI Angle 3.00/TCH 69°).				ZIKRO I-CJL 22.1	
								CELAK I-CJL 12.7 RADAR		AGANE I-CJL 15.8 RADAR		I-CJL 18.9 RADAR	
		FINKA I-CJL 6.1 RADAR		BUGNE I-CJL 10.1 RADAR								RADAR	
												164° 7000	
												G5 3.00° TCH 55	

CATEGORY II & III ILS - SPECIAL AIRCREW
& AIRCRAFT CERTIFICATION REQUIRED



ILS RWY 16R (CAT II & III)