

LOC/DME F-SNQ

110.3

Chan **40**

APP CRS

164°

Rwy Idg

11901

TDZE

432

Apt Elev

432

ILS RWY 16L (SA CAT I)

SEATTLE-TACOMA INTL (SEA)

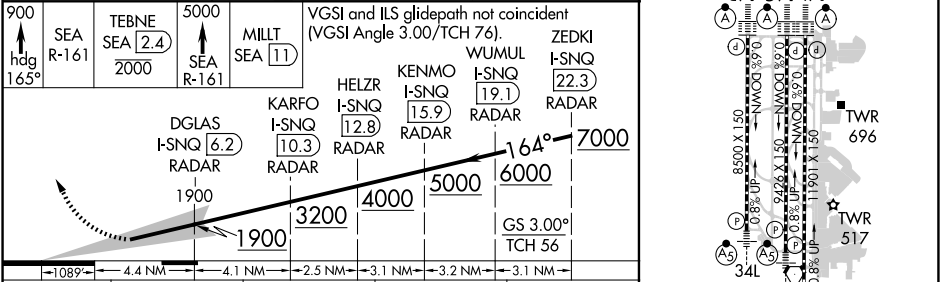
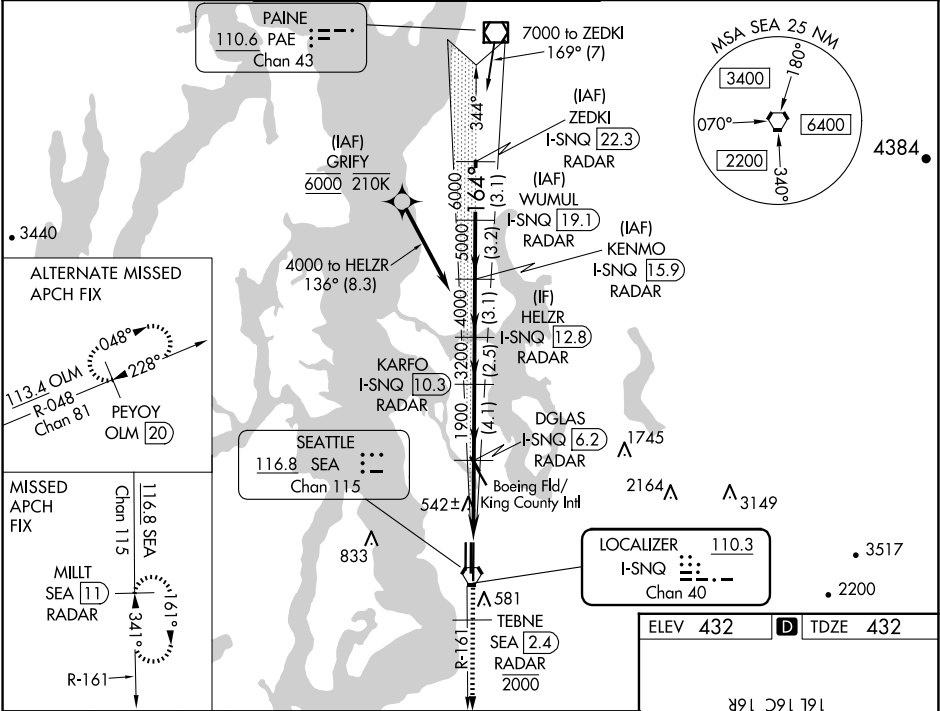
DME or RADAR required. RNP APCH-GPS, from GRIFY.

Simultaneous approach authorized.
Requires specific OPSPEC, MSPEC, or LOA approval.

ALSF-2

MISSED APPROACH: Climb to 900 on heading 165° then on SEA VORTAC R-161 to cross TEBNE/SEA 2.4 DME/RADAR at or below 2000 then climb to 5000 on SEA VORTAC R-161 to MILIT/SEA 11 DME/RADAR and hold, continue climb-in-hold to 5000.

D-ATIS	SEATTLE APP CON	SEATTLE TOWER	GND CON	CINC DEL	CPDLC
118.0	133.65 273.45	119.9 239.3 (Rwys 16L, 16C, 34R) 120.95 239.3 (Rwys 16R, 34L)	121.7	128.0	



CATEGORY	A	B	C	D
S-ILS 16L	NA	RA 248/14	150 DA 582	

SA CATEGORY I ILS - SPECIAL AIRCREW & AIRCRAFT CERTIFICATION REQUIRED

SEATTLE, WASHINGTON
Amdt 8A 17JUN21

SEATTLE-TACOMA INTL (SEA)
ILS RWY 16L (SA CAT I)

HIRL all Rwys
TDZ/CL Rwys 16L, 16C, 16R and 34R

NW-1, 10 JUL 2025 to 07 AUG 2025

NW-1, 10 JUL 2025 to 07 AUG 2025