

VOR RWY 6

VOR/DME OZR 111.2 Chan 49	APCH CRS 056°	Rwy Idg TDZE 298 Arprt Elev 301
---------------------------------	------------------	---

[USA]

CAIRNS AAF (KOZR)

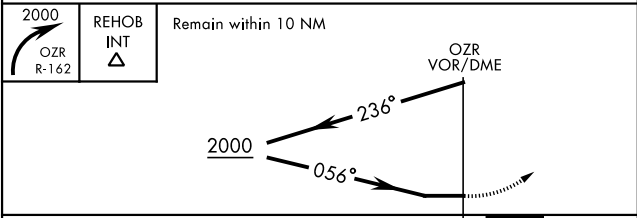
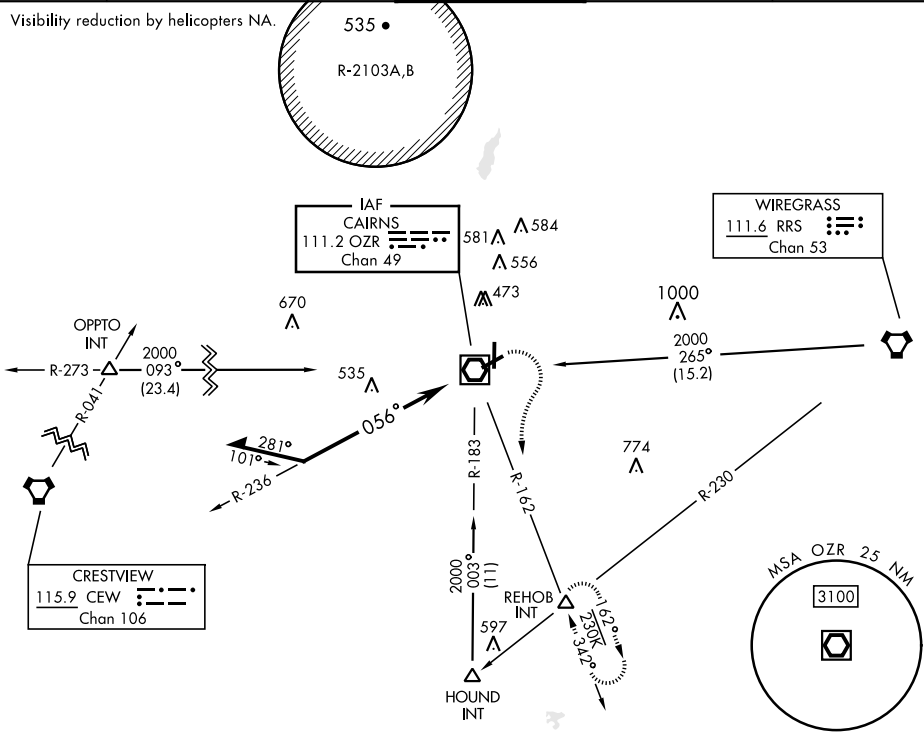
▼ * When ALS inop, increase CAT AB RVR to 55, vis to 1 mile; CAT CD vis to 1½ miles.
** Circling to RWY 24 at night not authorized.



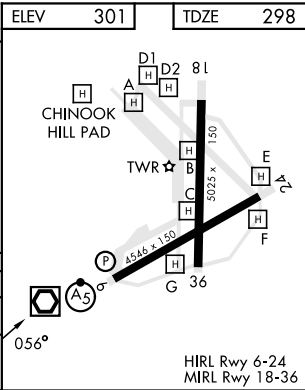
MISSED APPROACH: Climbing right turn to 2000 via OZR VOR/DME R-162 to REHOB INT and hold; or when directed by ATC, climbing left turn to 2000 heading 290° within 10 NM (RADAR required).

ATIS 111.2 316.15	APP CON ★ 021°-120° 125.4 327.125 121°-219° 133.75 270.35 220°-340° 133.45 239.275 341°-020° 121.1 319.25	TOWER ★ 135.2 (CTAF) 248.55	GND CON ★ 121.9 288.25	CLNC DEL ★ 118.075 380.1
-------------------------	---	-----------------------------------	------------------------------	--------------------------------

Visibility reduction by helicopters NA.



CATEGORY	A	B	C	D
S-6 *	840/24 542 (600-½)	840/60 542 (600-1½)		
CIRCLING **	840-1 539 (600-1)	900-1½ 599 (600-1½)	900-2 599 (600-2)	



VOR RWY 6

SE-4, 10 JUL 2025 to 07 AUG 2025

SE-4, 10 JUL 2025 to 07 AUG 2025