
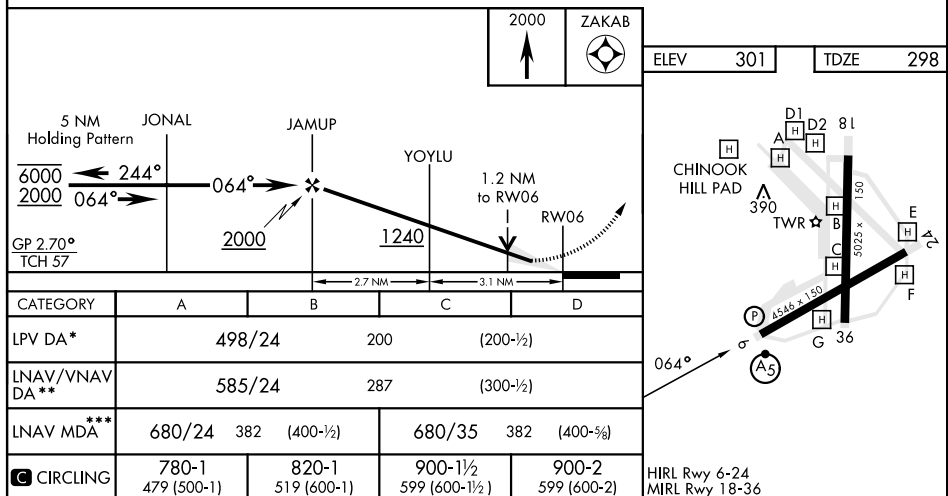
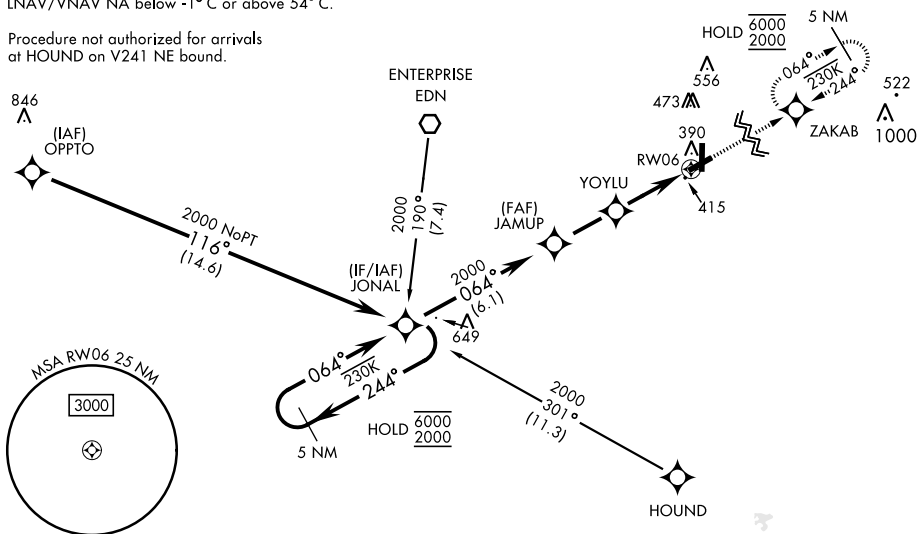


RNAV (GPS) RWY 6

WAAS CH 50537 W06A		APCH CRS 064°	Rwy Idg 4546 TDZE 298 Arpt Elev 301	[USA]	CAIRNS AAF (KOZRY)	
RNP APCH - GPS				MALSR 	MISSED APPROACH: Climb to 2000 direct ZAKAB and hold.	
<p>V * When ALS inop, increase RVR to 40, vis to $\frac{3}{4}$ mile. ** When ALS inop, increase RVR to 45, vis to $\frac{7}{8}$ mile. *** When ALS inop, increase CAT AB RVR to 55, vis to 1 mile; CAT CD RVR to 60, vis to 1 $\frac{1}{8}$ miles.</p>						
ATIS 111.2 316.15	APP CON ★ 021°-120° 125.4 327.125 121°-219° 133.75 270.35 220°-340° 133.45 239.275 341°-020° 121.1 319.25		TOWER ★ 135.2 (CTAF) 248.55	GND CON ★ 121.9 288.25	CLNC DEL★ 118.075 380.1	

For uncompensated Baro-VNAV systems,
LNAV/VNAV NA below -1°C or above 54°C .

Procedure not authorized for arrivals
at HOUND on V241 NE bound.



FORT NOVOSEL, ALABAMA

31° 17'N-85°43'W

CAIRNS AAF (KOZR)

RNAV (GPS) RWY 6

SE-4, 10 JUL 2025 to 07 AUG 2025

SE-4. 10 JUL 2025 to 07 AUG 2025