

RNAV (GPS) RWY 36

WAAS CH <b>63110</b> <b>W36A</b>	APCH CRS <b>004°</b>	Rwy Idg TDZE Arprt Elev	<b>5025</b> <b>298</b> <b>301</b>
--	-------------------------	-------------------------------	---

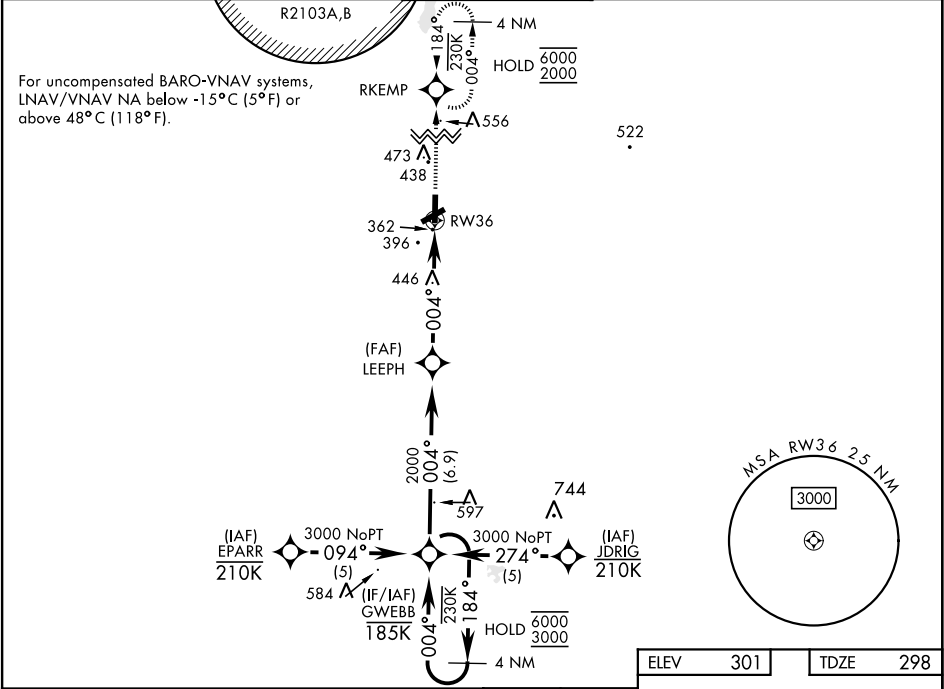
[USA]

CAIRNS AAF (KOZR)

RNP APCH - GPS

MISSED APPROACH: Climb to 2000 direct RKEMP and hold.

ATIS <b>111.2</b> <b>316.15</b>	APP CON ★ 021°-120° <b>125.4 327.125</b> 121°-219° <b>133.75 270.35</b> 220°-340° <b>133.45 239.275</b> 341°-020° <b>121.1 319.25</b>	TOWER ★ <b>135.2 (CTAF)</b> <b>248.55</b>	GND CON ★ <b>121.9</b> <b>288.25</b>	CLNC DEL ★ <b>118.075</b> <b>380.1</b>
---------------------------------------	---	---	--	--



4 NM

Holding Pattern GWEBB

2000

RKEMP

6000

3000

GP 3.00°

TCH 51

184°

004°

004°

2000

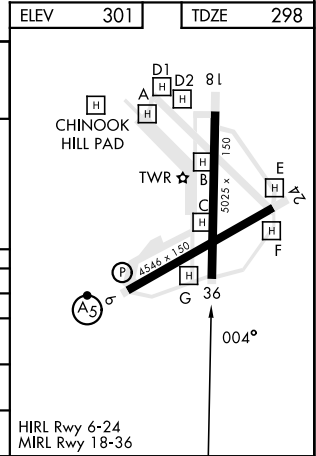
LEEPPH

1.2 NM to RW36

RW36

5.1 NM

CATEGORY	A	B	C	D
LPV DA	548-¾	250	(300-¾)	
LNAV/ VNAV DA	557-¾	259	(300-¾)	
LNAV MDA	740-1	442 (500-1)	740-1½	442 (500-1½)
CIRCLING*	780-1 479 (500-1)	820-1 519 (600-1)	900-1½ 599 (600-1½)	900-2 599 (600-2)



RNAV (GPS) RWY 36

SE-4, 10 JUL 2025 to 07 AUG 2025

SE-4, 10 JUL 2025 to 07 AUG 2025