

ILS or LOC RWY 6

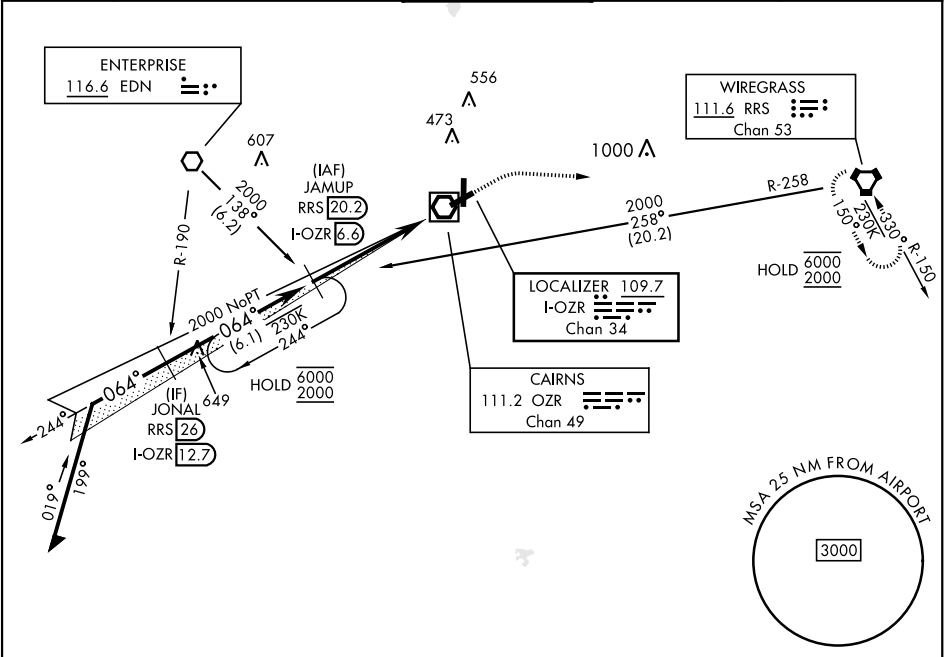
LOC/DME I-OZR 109.7 Chan 34	APCH CRS 064°	Rwy Idg TDZE Arpt Elev 4546 298 301
---	-------------------------	---

[USA]

CAIRNS AAF (KOZR)

RADAR or DME required *When ALS inop, increase RVR to 40, vis to ¾ mile. **When ALS inop, increase CAT AB RVR to 55, vis to 1 mile, CAT CD vis to 1 ½ miles.	MALSR AS	MISSED APPROACH: Climb to 800 then climbing right turn to 2000 direct RRS VORTAC and hold; or when directed by ATC, climb to 800 then climbing left turn to 2000 heading 290° within 10 NM (RADAR required).
--	-------------	--

ATIS 111.2 316.15	APP CON ★ 021°-120° 125.4 327.125 121°-219° 133.75 270.35 220°-340° 133.45 239.275 341°-020° 121.1 319.25	TOWER ★ 135.2 (CTAF) 248.55	GND CON ★ 121.9 288.25	CLNC DEL ★ 118.075 380.1
---------------------------------------	---	---	--	--



Remain within 10 NM

JAMUP RRS 20.2

I-OZR 6.6

244°

6000

2000

064°

2000

GS 2.70° TCH 57

5.8 NM

I-OZR 2.4

HAVER I-OZR 0.9

800

2000

RRS

ELEV 301

TDZE 298

CHINOOK HILL PAD

TWR

5025 x 36

4546 x 150

064°

HIRL Rwy 6-24

MIRL Rwy 18-36

CATEGORY	A	B	C	D
S-ILS 6*	498/24 200 (200-½)			
S-LOC 6**	780/24 482 (500-½)	780/50 482 (500-1)		
CIRCLING	780-1 479 (500-1)	820-1 519 (600-1)	900-1½ 599 (600-1½)	900-2 599 (600-2)

ILS or LOC RWY 6

SE-4, 10 JUL 2025 to 07 AUG 2025

SE-4, 10 JUL 2025 to 07 AUG 2025