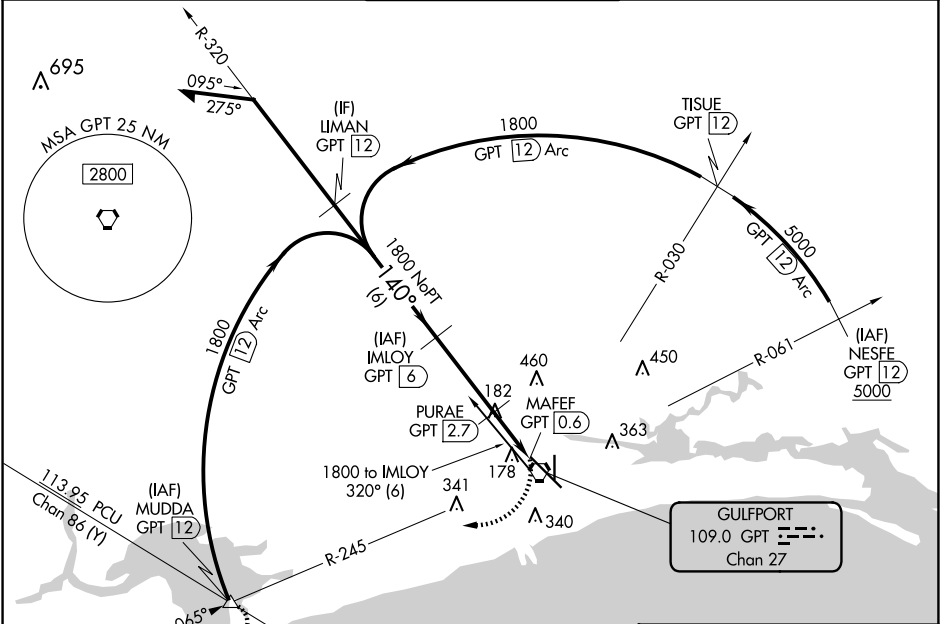


VORTAC GPT	APP CRS	Rwy Idg	9002
109.0	140°	TDZE	27
Chan 27		Apt Elev	28

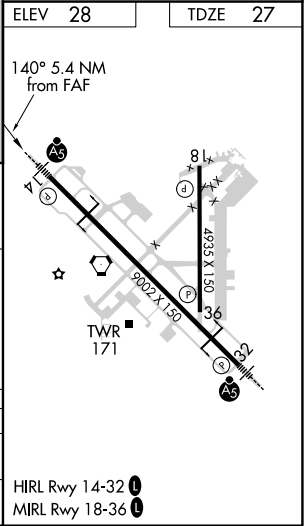
VOR Z or TACAN Z RWY 14  
GULFPORT-BILOXI INTL (GPT)

DME required.	MALSR	MISSED APPROACH: Climbing right turn to 2000 on GPT VORTAC R-245 to MUDDA INT/12 DME and hold.
For inop ALS, increase S-14 Cat C/D/E visibility to RVR 6000.	ASR	

ATIS 119.45	GULFPORT APP CON ★ 127.5 254.25	GULFPORT TOWER ★ 123.7 (CTAF) 0 339.8	GND CON 120.4 348.6	UNICOM 122.95
----------------	------------------------------------	--	------------------------	------------------



<div>Remain within 15 NM</div> <div></div>		IMLOY GPT 6	2000	GPT R-245	MUDDA △
VGSI and descent angles not coincident (VGSI Angle 3.00/TCH 73).		PURAE GPT 2.7	GPT 1.7	MAFEF GPT 0.6	
CATEGORY	A	B	C	D	E
S-14	440/24	413 (500-½)	440/40	413 (500-¾)	
CIRCLING	520-1 492 (500-1)	640-1 612 (700-1)	820-2¼ 792 (800-2¼)	820-2½ 792 (800-2½)	820-2¾ 792 (800-2¾)



SC-4, 10 JUL 2025 to 07 AUG 2025

SC-4, 10 JUL 2025 to 07 AUG 2025