

VORTAC GPT 109.0 Chan 27	APP CRS 307°	Rwy Idg 9002 TDZE 27 Apt Elev 28
----------------------------------------------	------------------------	-------------------------------------------------------------

VOR Z RWY 32
GULFPORT-BILOXI INTL (GPT)

DME required.

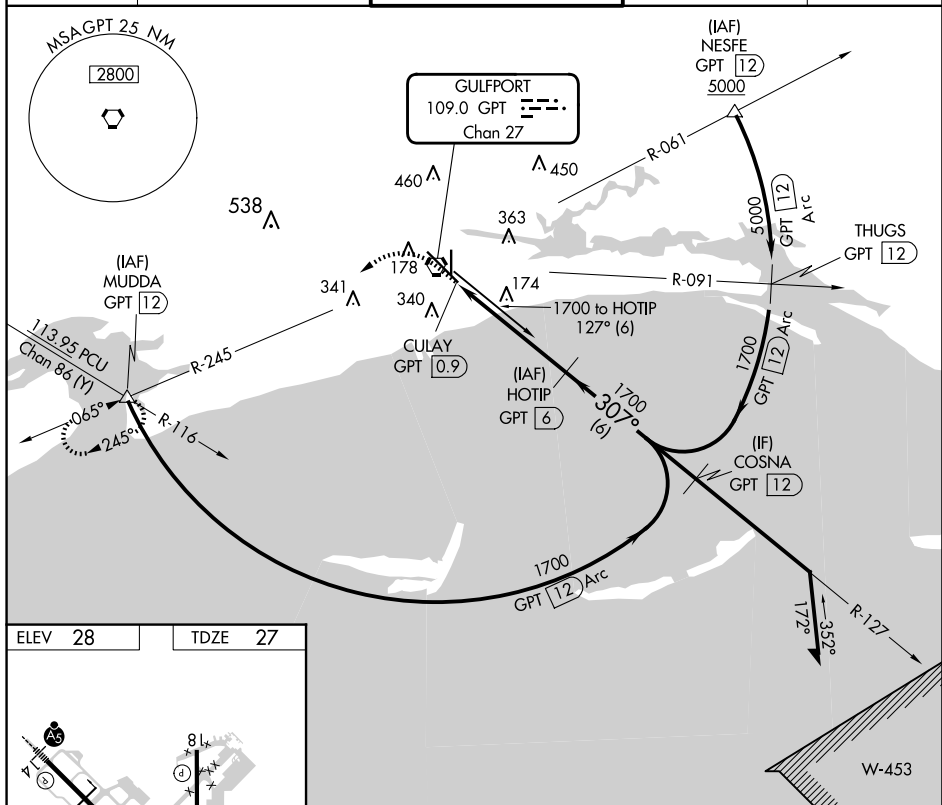
T Rwy 32 helicopter visibility reduction below RVR 4000 NA.
A For inop ALS, increase S-32 Cat A/B visibility to RVR 5500,
 ASR and Cat C/D/E to RVR 6000.

MALSR

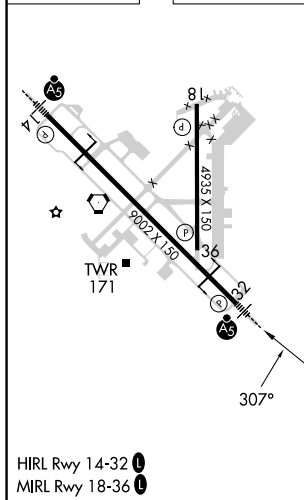


MISSED APPROACH: Climb to 700 then climbing left turn to 2000 on GPT VORTAC R-245 to MUDDA INT/12 DME and hold.

ATIS 119.45	GULFPORT APP CON ★ 127.5 254.25	GULFPORT TOWER ★ 123.7 (CTAF) 0 339.8	GND CON 120.4 348.6	UNICOM 122.95
-----------------------	-------------------------------------------	-------------------------------------------------	-------------------------------	-------------------------



ELEV 28		TDZE 27
---------	--	---------



700 ↑	2000 ↘	GPT R-245	MUDDA △	HOTIP GPT 6	Remain within 15 NM
CATEGORY	A	B	C	D	E
S-32	440/40 413 (500-¾)				
CIRCLING	520-1 492 (500-1)	640-1 612 (700-1)	760-2 732 (800-2)	760-2¼ 732 (800-2¼)	760-2½ 732 (800-2½)