

VORTAC GPT	APP CRS	Rwy Idg	9002
109.0	308°	TDZE	27
Chan 27		Apt Elev	28

VOR Y RWY 32  
GULFPORT-BILOXI INTL (GPT)

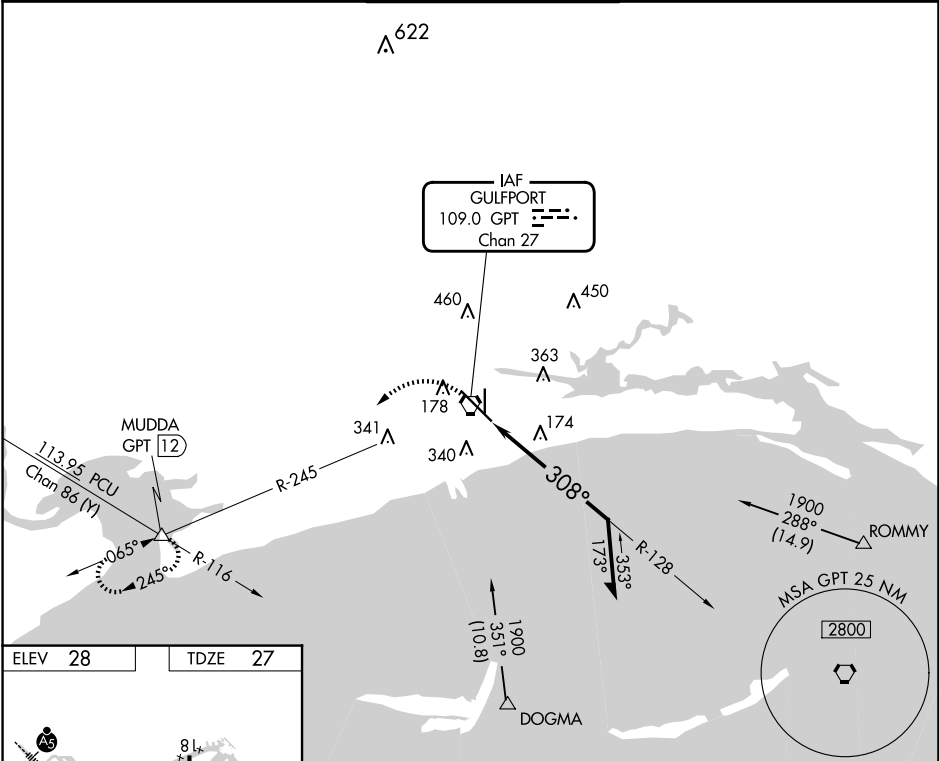
**ASR**

Rwy 32 helicopter visibility reduction below RVR 4000 NA.  
For inop ALS, increase S-32 Cat A/B visibility to RVR 5500.

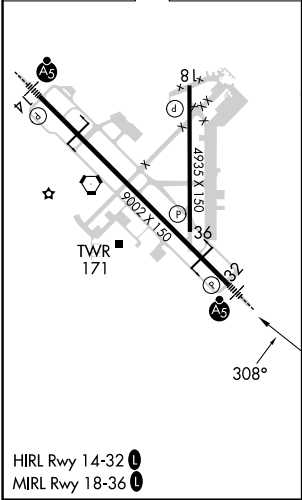
**MALSR**

**MISSED APPROACH:** Climbing left turn to 2000 on GPT VORTAC R-245 to MUDDA INT/12 DME and hold.

ATIS 119.45	GULFPORT APP CON ★ 127.5 254.25	GULFPORT TOWER ★ 123.7 (CTAF) 0 339.8	GND CON 120.4 348.6	UNICOM 122.95
----------------	------------------------------------	--	------------------------	------------------



ELEV 28	TDZE 27
---------	---------



2000

GPT R-245

MUDDA

VGSI and descent angles not coincident (VGSI Angle 3.00/TCH 72).

GPT VORTAC

128° 1900 308°

Remain within 10 NM

1.2 NM

CATEGORY	A	B	C	D
S-32	480/40 453 (500-¾)		480/45 453 (500-¾)	
CIRCLING	520-1 492 (500-1)	640-1 612 (700-1)	760-2 732 (800-2)	760-2¼ 732 (800-2¼)

SC-4, 10 JUL 2025 to 07 AUG 2025

SC-4, 10 JUL 2025 to 07 AUG 2025