

WAAS CH <b>69512</b> <b>W18A</b>	APP CRS <b>182°</b>	Rwy Idg <b>4935</b> TDZE <b>27</b> Apt Elev <b>28</b>
--	------------------------	---

RNAV (GPS) RWY 18  
GULFPORT-BILOXI INTL (GPT)

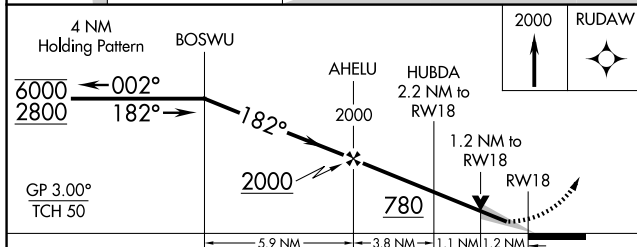
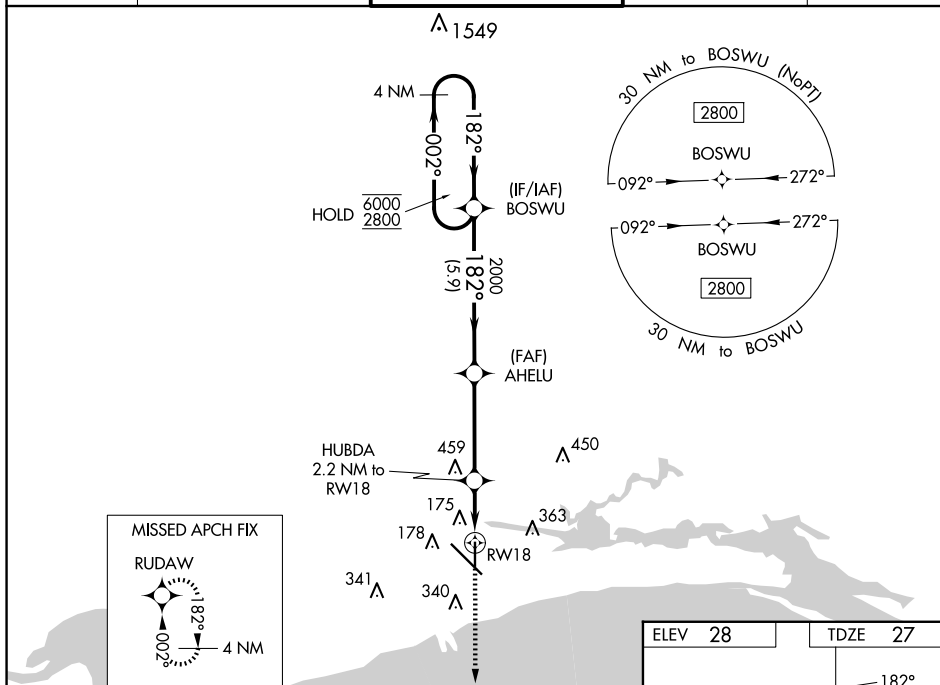
RNP APCH - GPS.




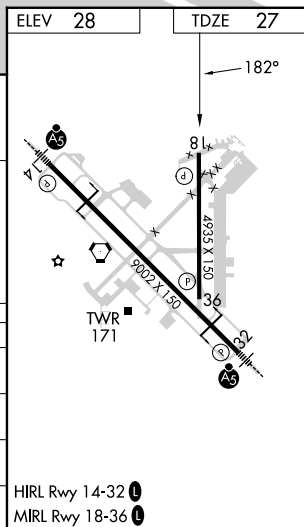
**A** For uncompensated Baro-VNAV systems, LNAV/VNAV NA below -3°C or above 54°C.

**MISSED APPROACH:** Climb to 2000 direct RUDAW and hold.

ATIS <b>119.45</b>	GULFPORT APP CON ★ <b>127.5 254.25</b>	GULFPORT TOWER ★ <b>123.7 (CTAF) 0 339.8</b>	GND CON <b>120.4 348.6</b>	UNICOM <b>122.95</b>
-----------------------	---	---	-------------------------------	-------------------------



CATEGORY	A	B	C	D
LPV DA	227- $\frac{3}{4}$ 200 (200- $\frac{3}{4}$ )			
INAV/ VNAV DA	442-1 $\frac{1}{8}$ 415 (500-1 $\frac{1}{8}$ )			
INAV MDA	440-1 413 (500-1)		440-1 $\frac{1}{8}$ 413 (500-1 $\frac{1}{8}$ )	
 CIRCLING	520-1 492 (500-1)	640-1 612 (700-1)	760-2 732 (800-2)	760-2 $\frac{1}{4}$ 732 (800-2 $\frac{1}{4}$ )



RNAV (GPS) RWY 18