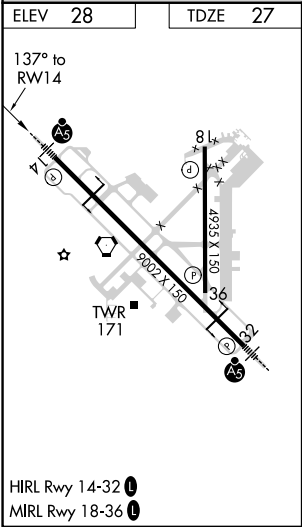
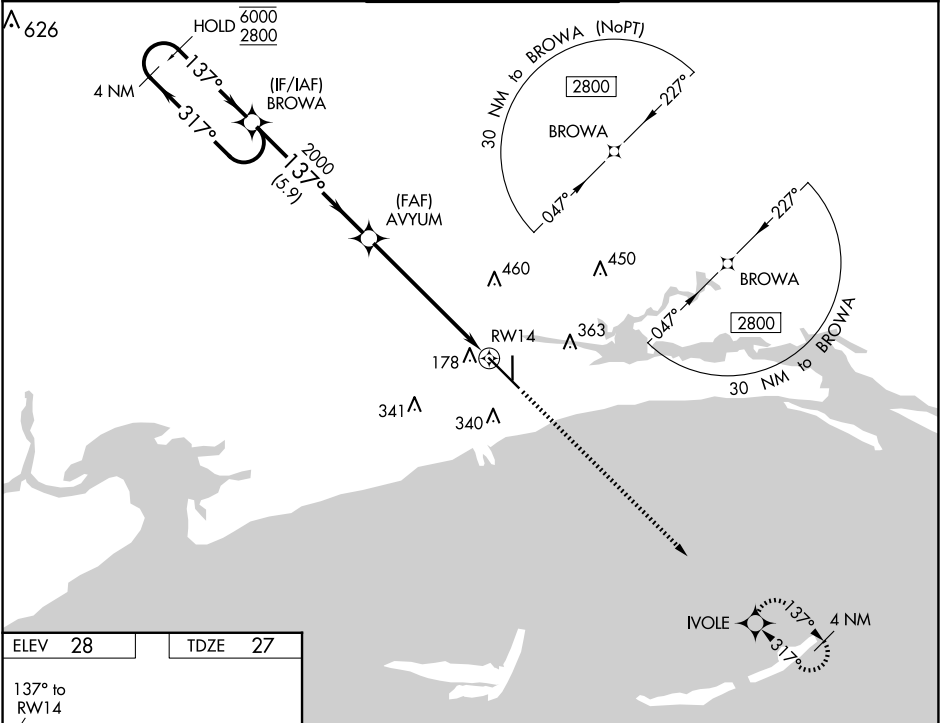


WAAS CH 97301 W14A	APP CRS 137°	Rwy Idg 9002 TDZE 27 Apt Elev 28
--	------------------------	---

RNAV (GPS) RWY 14
GULFPORT-BILOXI INTL (GPT)

RNP APCH. ▼ For uncompensated Baro-VNAV systems, LNAV/VNAV NA below -3°C or above 54°C. For inop ALS, increase LNAV/VNAV all Cats visibility to RVR 5500. ▲ ASR **RVR 1800 authorized with use of FD or AP or HUD to DA.		MALS R ▲	MISSED APPROACH: Climb to 2800 direct IVOLE and hold.	
ATIS 119.45	GULFPORT APP CON ★ 127.5 254.25	GULFPORT TOWER ★ 123.7 (CTAF) 0 339.8	GND CON 120.4 348.6	UNICOM 122.95



4 NM Holding Pattern		VGSI and RNAV glidepath not coincident (VGSI Angle 3.00/TCH 73).		2800	IVOLE
6000 2800		317° 137°		2000	*LNAV only.
GP 3.00° TCH 50		5.9 NM		4.6 NM	1.5 NM
CATEGORY	A	B	C	D	
LPV DA**		227/24	200 (200-½)		
LNAV/VNAV DA		404/35	377 (400-⅝)		
LNAV MDA	580/24	553 (600-½)	580/60	553 (600-1¼)	
CIRCLING	580-1 552 (600-1)	640-1 612 (700-1)	820-2¼ 792 (800-2¼)	820-2½ 792 (800-2½)	

SC-4, 10 JUL 2025 to 07 AUG 2025

SC-4, 10 JUL 2025 to 07 AUG 2025