

GULFPORT, MISSISSIPPI

HI-TACAN Y RWY 14

VORTAC GPT 109.0 Chan 27	APCH CRS 140°	Rwy Idg 9002 TDZE 27 Arpt Elev 28
--	-------------------------	--

[USAF]

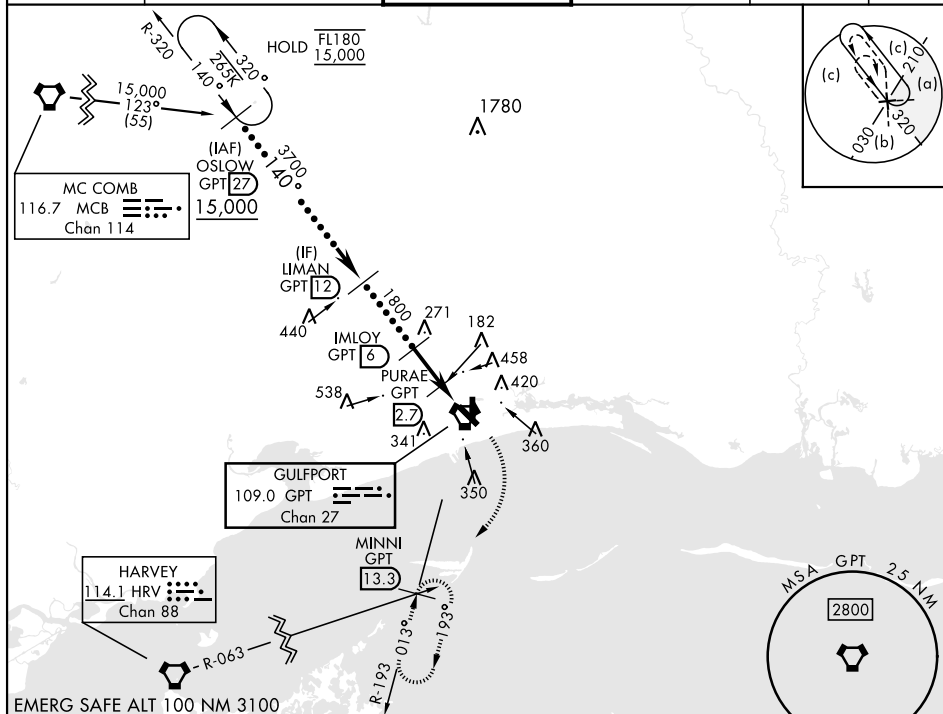
GULFPORT-BILOXI INTL (KGPT)

T * When ALS inop, increase RVR to 6000.
A ** When ALS inop, increase vis to 1 3/8 miles.

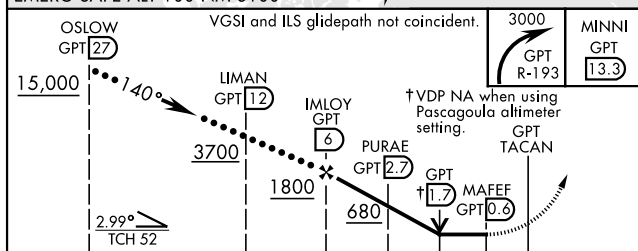




MISSED APPROACH: Climbing right turn to 3000 on GPT R-193 to MINNI/13.3 DME and hold.

ATIS ★ 119.45	GULFPORT APP CON 124.6 354.1 130°-309° 127.5 254.25 310°-129°	GULFPORT TOWER ★ 123.7 CTAF 0 339.8	GND CON 120.4 348.6	UNICOM 122.95	ASR
------------------	---	--	------------------------	------------------	-----

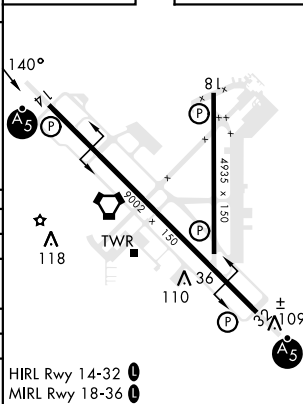


EMERG SAFE ALT 100 NM 3100



CATEGORY	C	D	E
S-14 *	440/40	413	(500- $\frac{3}{4}$)
 CIRCLING	820-2 $\frac{1}{4}$ 792 (800-2 $\frac{1}{2}$)	820-2 $\frac{1}{2}$ 792 (800-2 $\frac{1}{2}$)	820-2 $\frac{3}{4}$ 792 (800-2 $\frac{3}{4}$)
PASCAGOULA ALTIMETER MINIMUMS			
S-14 **	520/50	413	(500-1)
 CIRCLING	900-2 $\frac{1}{2}$ 792 (800-2 $\frac{1}{2}$)	900-2 $\frac{3}{4}$ 792 (800-2 $\frac{1}{2}$)	900-3 792 (800-3)

ELEV	28		TDZE	27
------	----	--	------	----



GULFPORT, MISSISSIPPI

30°24'N-89°04'W

GULFPORT-BILOXI INTL (KGPT)

Amdt 7A 16MAY24

HI-TACAN Y RWY 14

SC-4, 10 JUL 2025 to 07 AUG 2025

SC-4, 10 JUL 2025 to 07 AUG 2025