
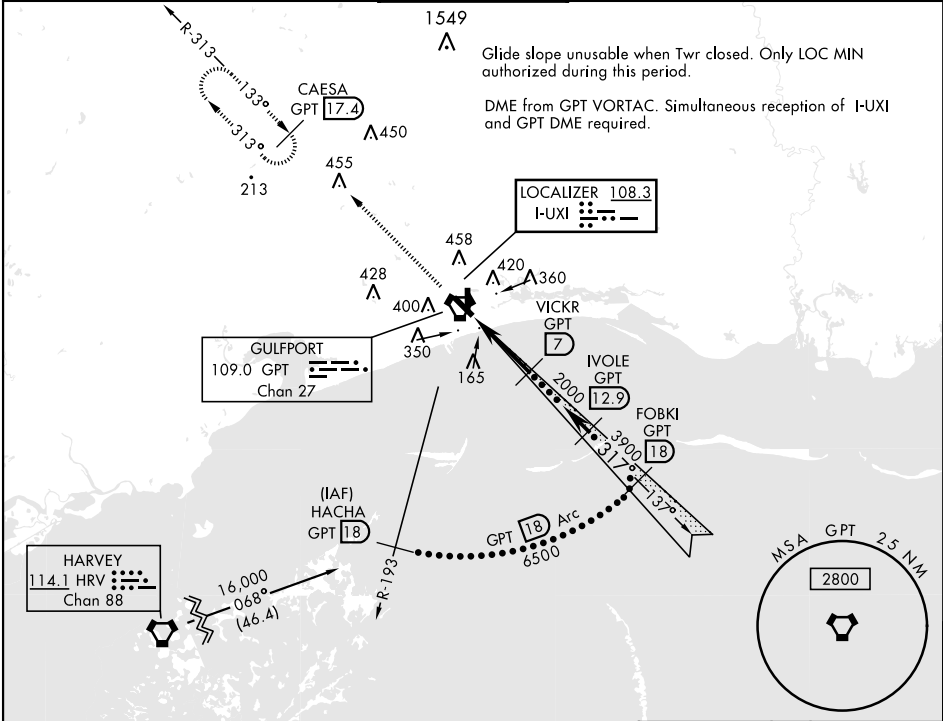


GULFPORT, MISSISSIPPI

HI-ILS Y or LOC Y RWY 32

LOC I-UXI 108.3	APCH CRS 317°	Rwy Idg TDZE Arpt Elev 9002 27 28	AL-576 [USAF]	GULFPORT-BILOXI INTL (KGPT)		
RADAR or DME required.			MALSR 	MISSED APPROACH: Climb to 2000 on GPT VORTAC R-313 to CAESA/GPT 17.4 DME and hold.		
ATIS ★ 119.45	GULFPORT APP CON 124.6 354.1 130°-309° 127.5 254.25 310°-129°		GULFPORT TOWER ★ 123.7 CTAF 0 339.8	GND CON 120.4 348.6	UNICOM 122.95	ASR



EMERG SAFE ALT 100 NM 3100

Diagram illustrating the instrument approach procedure for Gulfport-Biloxi International Airport (KGPT). The diagram shows the VORTAC station, LOC MAP, and various altitudes and angles. The approach is a 317° 6 NM from FAF. Key altitudes include 2000, 3900, 6500, and 16,000. The diagram also shows the VGSi and descent angles not coincident (VGSi Angle 3.00/TCH 72).

CATEGORY	C	D	E
S-ILS 32 *	228/24	200	(200-½)
S-LOC 32 **	380/30	352	(400-¾)
CIRCLING	820-2¼ 791 (800-2¼)	820-2½ 791 (800-2½)	820-2¾ 791 (800-2¾)

Diagram illustrating the instrument approach procedure for Gulfport-Biloxi International Airport (KGPT). The diagram shows the VORTAC station, LOC MAP, and various altitudes and angles. The approach is a 317° 6 NM from FAF. Key altitudes include 2000, 3900, 6500, and 16,000. The diagram also shows the VGSi and descent angles not coincident (VGSi Angle 3.00/TCH 72).

HI-ILS Y or LOC Y RWY 32

SC-4, 10 JUL 2025 to 07 AUG 2025

SC-4, 10 JUL 2025 to 07 AUG 2025