

| | | |
|--|------------------------|---|
| WAAS CH 49217 W01A | APP CRS 003° | Rwy Idg 5000 TDZE 372 Apt Elev 372 |
|--|------------------------|---|

RNAV (GPS) RWY 1

STURGIS MUNI (TWT)

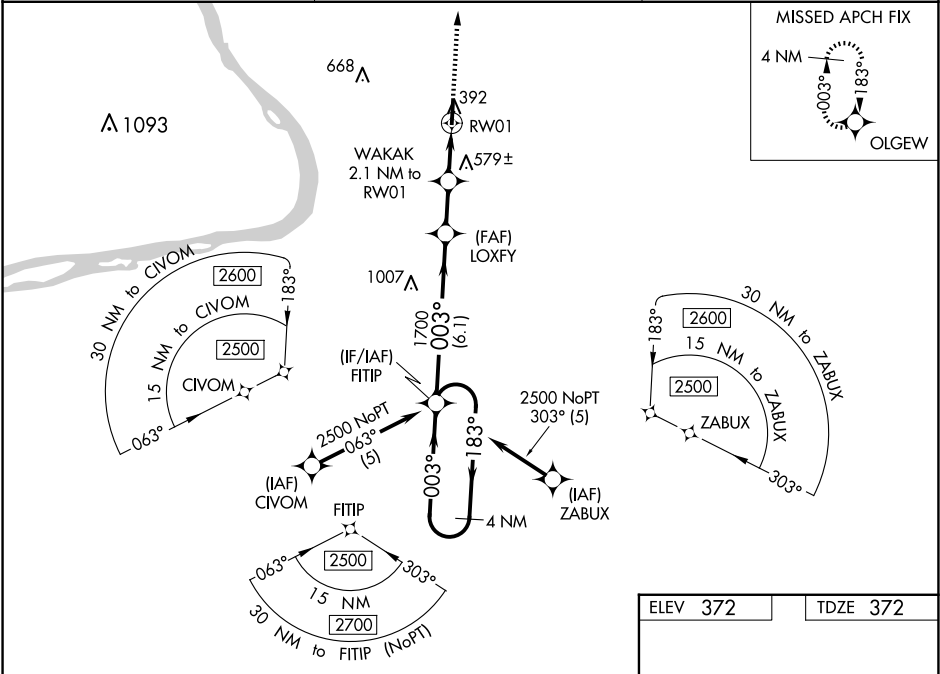
▼

▲ NA

Baro-VNAV NA when using Henderson altimeter setting. For uncompensated Baro-VNAV systems, LNAV/VNAV NA below -15°C (5°F) or above 54°C (130°F). DME/DME RNP-0.3 NA. When local altimeter setting not received use Henderson altimeter setting and increase LPV DA to 708 and visibility all Cats to 1½ miles; increase LNAV/VNAV DA to 780 feet and visibility all Cats to 1¾ miles; increase all MDA 60 feet and Circling Cat C visibility ¼ mile. Helicopter visibility reduction below ¾ SM NA.

MISSED APPROACH:
Climb to 2500 direct
OLGEW and hold.

| | | |
|--------------------------|--|---------------------------------|
| AWOS-3 118.775 | EVANSVILLE APP CON ★ 124.025 290.9 | UNICOM 122.8 (CTAF) 0 |
|--------------------------|--|---------------------------------|



| | | | | | | | | | |
|----------------------|--|-------------------|--|---------------------|--|----------------------|--|----------------------|--|
| 4 NM Holding Pattern | | FITIP | | LOXFY | | WAKAK 2.1 NM to RW01 | | RW01 | |
| 2500 | | 183° | | 003° | | 1700 | | *1080 | |
| GP 3.00° TCH 45 | | 6.1 NM | | 1.9 NM | | 2.1 NM | | 2500 | |
| CATEGORY | | A | | B | | C | | D | |
| LPV DA | | 658-7/8 | | 286 (300-7/8) | | | | | |
| LNAV/VNAV DA | | 730-1¼ | | 358 (400-1¼) | | | | | |
| LNAV MDA | | 820-1 448 (500-1) | | 820-1¾ 448 (500-1¾) | | | | | |
| CIRCLING | | 860-1 488 (500-1) | | 1000-1 628 (700-1) | | 1000-1¾ 628 (700-1¾) | | 1120-2½ 748 (800-2½) | |

