

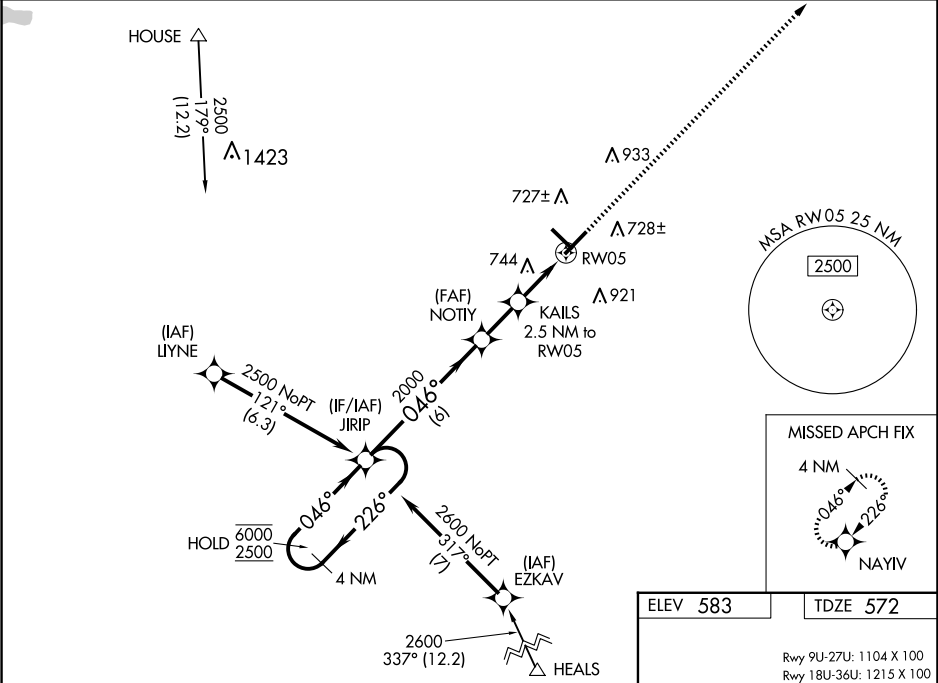
WAAS CH <b>53704</b> <b>W05A</b>	APP CRS <b>046°</b>	Rwy Idg TDZE <b>572</b> Apt Elev <b>583</b>	<b>6001</b>
--	------------------------	---	-------------

RNAV (GPS) RWY 5

FREEMAN MUNI (SE.R)

RNP APCH - GPS.	ODALS	MISSED APPROACH: Climb to 2400 direct NAYIV and hold.
<div><div>▼</div><div>NA</div></div> <div>Rwy 5 helicopter visibility reduction below ¾ SM NA. Inop table does not apply to LPV all Cats and LNAV Cats A/B. For uncompensated Baro-VNAV systems, LNAV/VNAV NA below -16°C or above 54°C. For inop ALS, increase LNAV/VNAV Cats C/D visibility to 1½ SM.</div>	<div><div>⊕</div><div>⋮</div></div>	

AWOS-3 <b>119.425</b>	LOUISVILLE APP CON <b>132.075 327.0</b>	UNICOM <b>122.8 (CTAF) 0</b>
--------------------------	--	---------------------------------



4 NM Holding Pattern		VGSI and RNAV glidepath not coincident (VGSI Angle 3.00/TCH 33).		2400	NAYIV
6000 2500		JIRIP	NOTIY	KAILS	
GP 3.00° TCH 45		2000	2000	2.5 NM to RW05	
226° 046°		046°	1400	1.3 NM to RW05	
6 NM		1.9 NM	1.2 NM	1.3 NM	
CATEGORY	A	B	C	D	
LPV DA	834-1		262 (300-1)		
LNAV/VNAV DA	1017-1½		445 (500-1½)		
LNAV MDA	1000-1	428 (500-1)	1000-1½	428 (500-1½)	
CIRCLING	1080-1 497 (500-1)	1140-1 557 (600-1)	1240-1¾ 657 (700-1¾)	1240-2 657 (700-2)	

