

EC-2, 10 JUL 2025 to 07 AUG 2025

SEYMOUR, INDIANA



AL-573 (FAA)

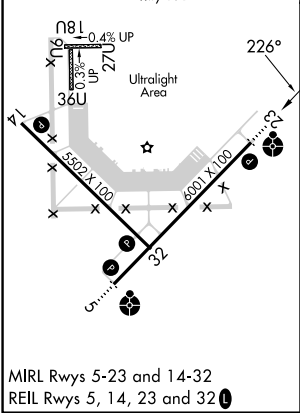
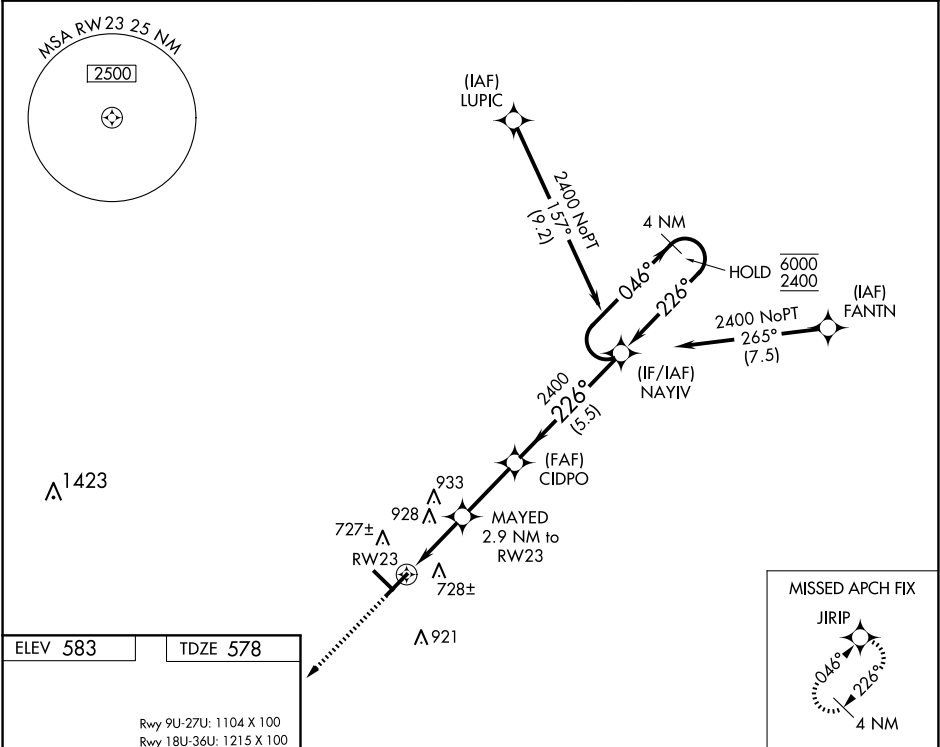
24193

WAAS CH 48903 W23A	APP CRS 226°	Rwy Idg TDZE 578 Apt Elev 583	6001
----------------------------------------	------------------------	---------------------------------------------------	-------------

RNAV (GPS) RWY 23

FREEMAN MUNI (SE.R)

RNP APCH - GPS.		ODALS 	MISSED APPROACH: Climb to 2500 direct JIRIP and hold.
 NA	For uncompensated Baro-VNAV systems, LNAV/VNAV NA below -16°C or above 54°C. Inop table does not apply to LPV all Cats and LNAV Cats A/B. For inop ALS, increase LNAV/VNAV Cats C/D visibility to 1% SM.		
AWOS-3 119.425		LOUISVILLE APP CON 132.075 327.0	
		UNICOM 122.8 (CTAF) 0	



2500	JIRIP	VGSI and RNAV glidepath not coincident (VGSI Angle 3.00/TCH 33).		4 NM Holding Pattern
RWY 23		MAYED 2.9 NM to RWY 23	CIDPO 2400	GP 3.00° TCH 45
1.7 NM to RWY 23		1.2 NM	2.7 NM	5.5 NM
CATEGORY	A	B	C	D
LPV DA	855-1		277 (300-1)	
LNAV/VNAV DA	1020-1 1/8		442 (500-1 1/8)	
LNAV MDA	1160-1	582 (600-1)	1160-1 1/2	582 (600-1 1/2)
CIRCLING	1160-1	577 (600-1)	1240-1 3/4	1240-2
			657 (700-1 3/4)	657 (700-2)

SEYMOUR, INDIANA
Amdt 3 08SEP22

38°55'N-85°55'W

RNAV (GPS) RWY 23

EC-2, 10 JUL 2025 to 07 AUG 2025