

LOC I-GLH <b>109.1</b>	APP CRS <b>181°</b>	Rwy Idg <b>7981</b> TDZE <b>129</b> Apt Elev <b>131</b>	ILS or LOC RWY 18L GREENVILLE MID-DELTA (GLH)	
---------------------------	------------------------	---	--	--

▼

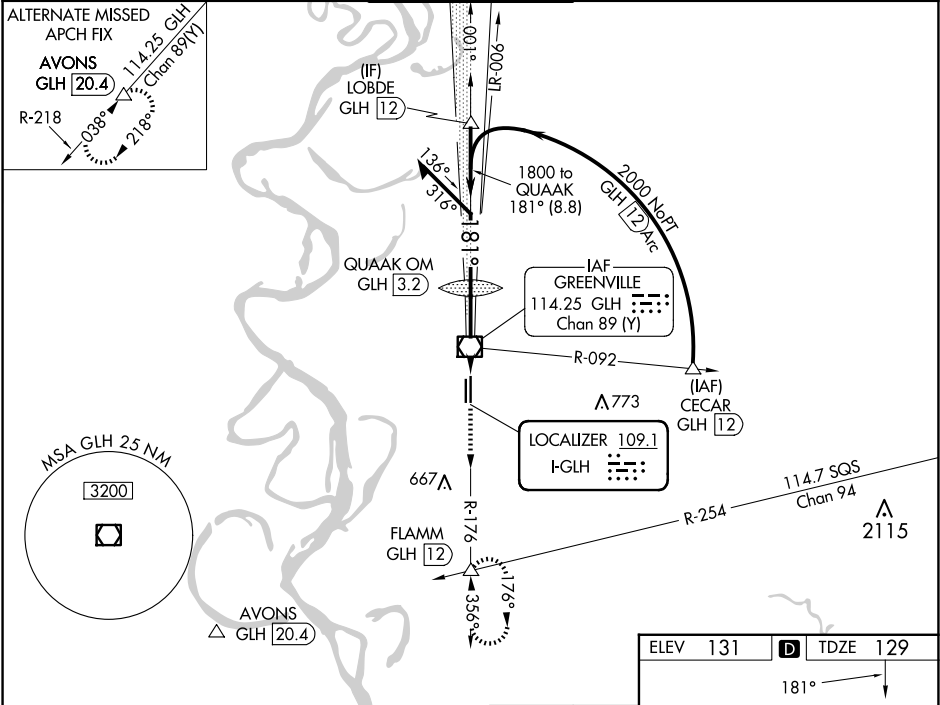
Inop table does not apply to S-ILS 18L all Cats and S-LOC 18L Cats A and B. For inop ALS, increase S-LOC 18L Cat C and D visibility to 1½ SM.

MALSR

AS

MISSED APPROACH: Climb to 2000 on GLH VOR/DME R-176 to FLAMM INT/GLH 12 DME and hold.

ASOS <b>125.525</b>	MEMPHIS CENTER <b>135.875 269.35</b>	GREENVILLE TOWER ★ <b>119.0</b> (CTAF) <b>0 256.9</b>	GND CON <b>121.8 256.9</b>	UNICOM <b>122.95</b>
------------------------	---	--	-------------------------------	-------------------------



Remain within 10 NM

GLH VOR/DME

2000 FLAMM  
GLH R-176

1800  
181°  
1800  
GS 3.00°  
TCH 53

QUAAK OM  
GLH **3.2**

1702

GLH **0.4**

3.2 NM 0.4 NM 1.2

CATEGORY	A	B	C	D
S-ILS 18L		329/50	200 (200-1)	
S-LOC 18L		580/50	451 (500-1)	
CIRCLING	600-1	469 (500-1)	600-1½ 469 (500-1½)	800-2 669 (700-2)

ELEV 131 D TDZE 129

181°  
18L  
HIRL Rwy 18L-36R  
MIRL Rwy 18R-36L  
REIL Rwy 36R  
881  
7019 X 150  
298  
36L 36R  
8001 X 150

FAF to MAP 4.8 NM

Knots	60	90	120	150	180
Min:Sec	4:48	3:12	2:24	1:55	1:36