

WAAS CH <b>86314</b> <b>W35A</b>	APP CRS <b>005°</b>	Rwy Idg <b>9001</b> TDZE <b>90</b> Apt Elev <b>96</b>
--	------------------------	---

RNAV (GPS) RWY 35R

ORLANDO INTL (MCO)

RNP APCH.

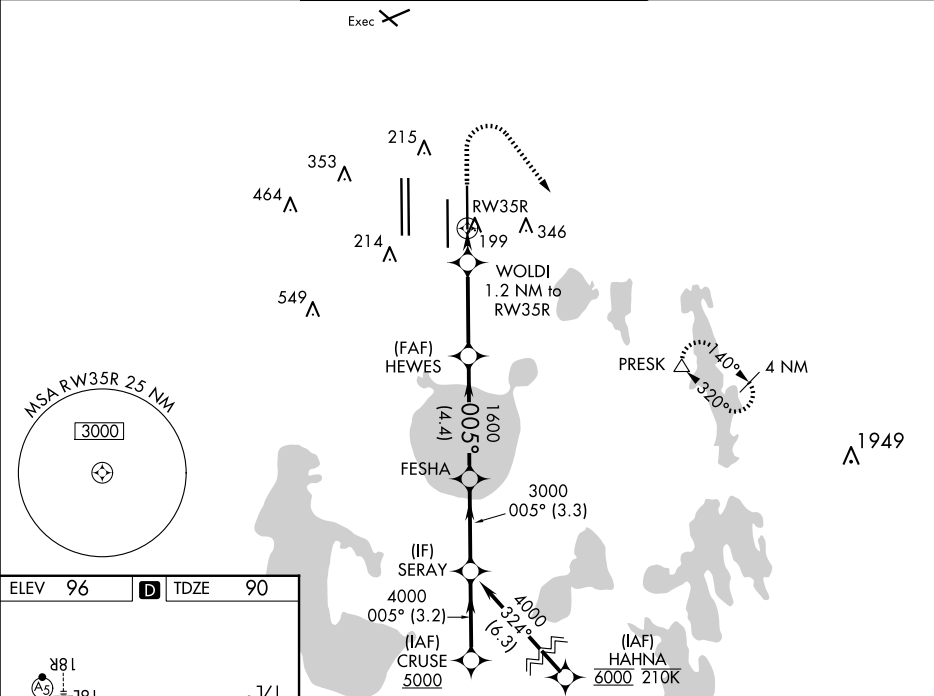
Simultaneous approach authorized. LNAV procedure NA during simultaneous operations. Use of FD or AP required during simultaneous operations. For uncompensated Baro-VNAV systems, LNAV/VNAV NA below 1°C or above 54°C. For inop ALS, increase LNAV/VNAV all Cats visibility to RVR 4500, and LNAV Cats C/D visibility to RVR 5500. Bright lights on highway midway between Rwy 35L and Rwy 35R may be mistaken for runway lights.

ALSF-2



MISSED APPROACH: Climb to 500 then climbing right turn to 3000 direct PRESK and hold, continue climb-in-hold to 3000.

D-ATIS ARR <b>121.25</b> DEP <b>120.525</b>	ORLANDO APP CON <b>124.8 307.0</b>	ORLANDO TOWER <b>118.45 253.5</b> (Rwys 17L-35R, 17R-35L) <b>124.3 253.5</b> (Rwys 18L-36R, 18R-36L)	GND CON <b>126.4</b> (East) <b>121.8</b> (West)	CLNC DEL <b>134.7</b> <b>341.7</b>	CPDLC
---	---------------------------------------	--	---	--	-------



ELEV 96	D	TDZE 90
---------	---	---------

