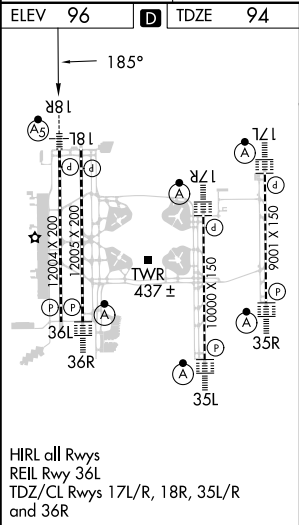
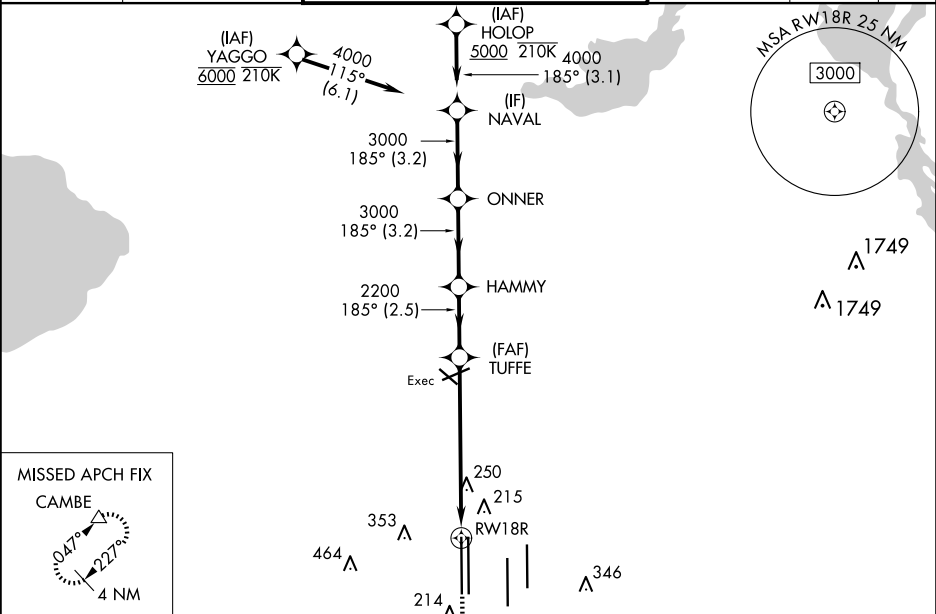


WAAS CH 63212 W18B	APP CRS 185°	Rwy Idg 12004 TDZE 94 Apt Elev 96
--	------------------------	--

RNAV (GPS) RWY 18R

ORLANDO INTL (MCO)

RNP APCH - GPS. ▼ LNAV procedure NA during simultaneous operations. Use of FD or AP required during simultaneous operations. Simultaneous approach authorized. For uncompensated Baro-VNAV systems, LNAV/VNAV NA below 1°C or above 54°C.			MALSR 	MISSED APPROACH: Climb to 500 then climbing right turn to 4000 direct CAMBE and hold, continue climb-in-hold to 4000.	
D-ATIS ARR 121.25 DEP 120.525	ORLANDO APP CON 124.8 307.0	ORLANDO TOWER 118.45 253.5 (Rwys 17L-35R, 17R-35L) 124.3 253.5 (Rwys 18L-36R, 18R-36L)	GND CON 126.4 (East) 121.8 (West)	CLNC DEL 134.7 341.7	CPDLC



549 \searrow		VGSi and RNAV glidepath not coincident (VGSi Angle 3.00/TCH 71).		500	4000	CAMBE
HOLOP	NAVAL	ONNER	HAMMY	TUFFE		\triangle
5000	185°			2200	1.2 NM to RW18R	
4000		3000	3000	2200	RW18R	
GP 3.00° TCH 55		3.2 NM	3.2 NM	2.5 NM	5.2 NM	1.2 NM
CATEGORY	A	B	C	D		
LPV DA	294/18 200 (200-½)					
LNAV/ VNAV DA	390/24 296 (300-½)					
LNAV MDA	540/24 446 (500-½)			540/45 446 (500-¾)		
C CIRCLING	740-1 644 (700-1)			740-1¾ 644 (700-1¾)		740-2 644 (700-2)