

WAAS CH 66012 W18A	APP CRS 185°	Rwy Idg 12004 TDZE 96 Apt Elev 96
--	------------------------	--

RNAV (GPS) RWY 18L

ORLANDO INTL (MCO)

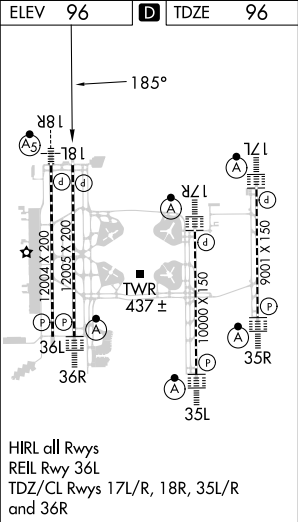
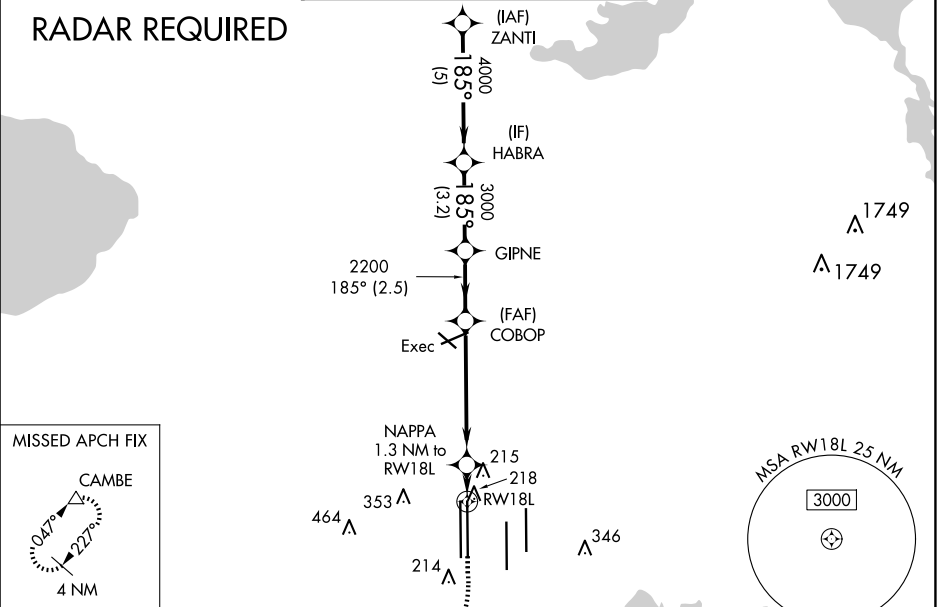
⚠

For uncompensated Baro-VNAV systems, LNAV/VNAV NA below -1°C (31°F) or above 54°C (130°F). DME/DME RNP-0.3 NA. Simultaneous approach authorized with Rwy 17L/R. LNAV procedure NA during simultaneous operations. Use of FD or AP providing RNAV track guidance required during simultaneous operations.

MISSED APPROACH:

Climb to 500 then climbing right turn to 4000 direct CAMBE and hold, continue climb-in-hold to 4000.

D-ATIS ARR 121.25 DEP 120.525	ORLANDO APP CON 124.8 307.0	ORLANDO TOWER 118.45 253.5 (Rwys 17L-35R, 17R-35L) 124.3 253.5 (Rwys 18L-36R, 18R-36L)	GND CON 126.4 (East) 121.8 (West)	CLNC DEL 134.7 341.7	CPDLC
---	---------------------------------------	--	---	--	-------



VGSi and RNAV glidepath not coincident (VGSi Angle 3.00/TCH 71).				
<p>Diagram details: VGSi and RNAV glidepaths, 500' to 4000' altitudes, 185° heading, CAMBE fix.</p>				
*LNAV only.				
<p>Diagram details: RNAV track segments, distances: 5 NM, 3.2 NM, 2.5 NM, 5.2 NM, 1.3 NM.</p>				
CATEGORY	A	B	C	D
LPV DA	296/40		200 (200-¾)	
LNAV/VNAV DA	398/50		302 (400-1)	
LNAV MDA	480/55 384 (400-1)		480/60 384 (400-1¼)	
CIRCLING	740-1 644 (700-1)		740-1¾ 644 (700-1¾) 740-2 644 (700-2)	