

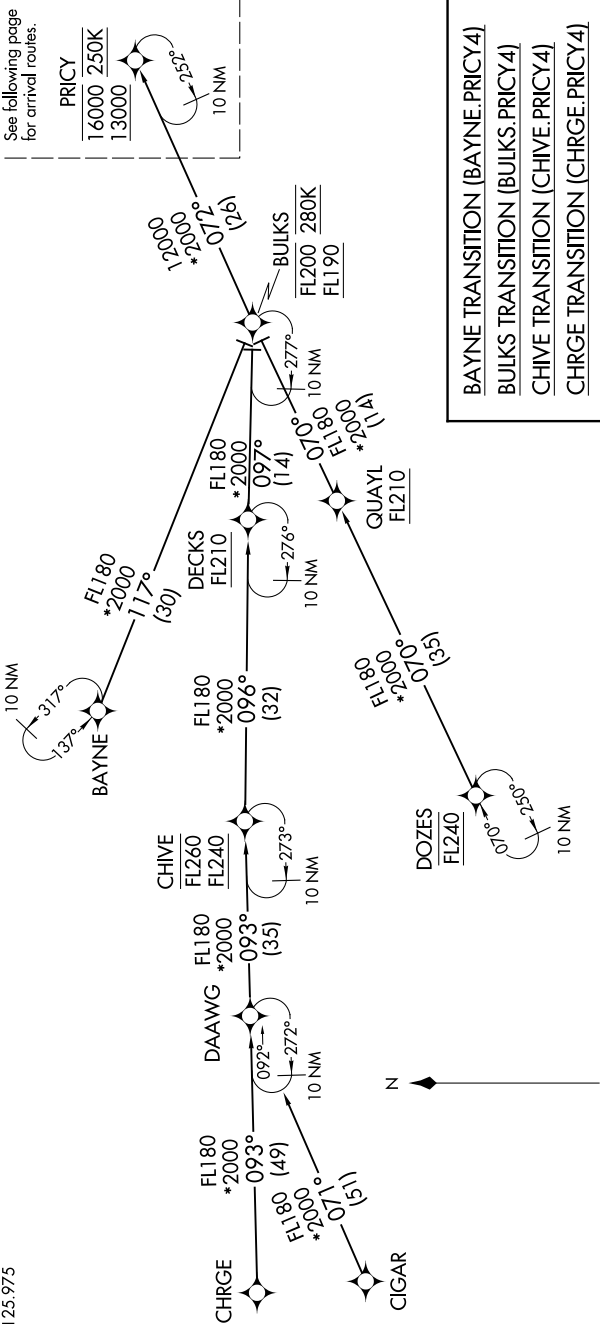
ORLANDO APP CON
134.05 339.8
ISM ATIS
128.775
LEE ATIS
134.325
MCO D-ATIS ARR
121.25
MLB ATIS
132.55
ORL ATIS
127.25
SFB ATIS
125.975

NOTE: Jet aircraft only.
NOTE: Do not file BULKS, CHIVE or DOZES Transitions - to be assigned by ATC.
NOTE: Landing south use Rwy 18R Transition, Landing north use Rwy 36L Transition.

PRIC4 FOUR ARRIVAL (RNAV) Transition Routes

RNAV 1 - DME/DME/IRU or GPS.
CHRG Transition - RNAV 1-GPS.
CIGAR Transition - RNAV 1-GPS.
RADAR required.

See following page for arrival routes.
PRIC4
16000 250K
13000
10 NM
75°



BAYNE TRANSITION (BAYNE.PRIC4)
BULKS TRANSITION (BULKS.PRIC4)
CHIVE TRANSITION (CHIVE.PRIC4)
CHRG TRANSITION (CHRG.PRIC4)
CIGAR TRANSITION (CIGAR.PRIC4)
DOZES TRANSITION (DOZES.PRIC4)

(CONTINUED ON FOLLOWING PAGE)

NOTE: Chart not to scale.