

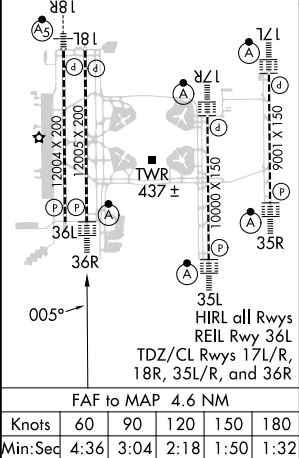
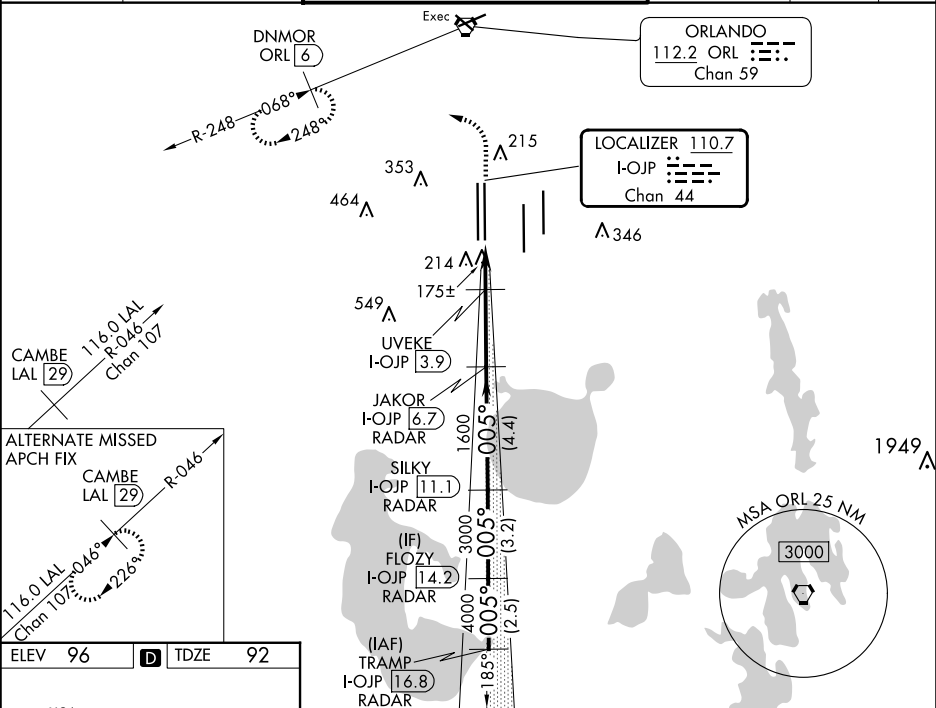
LOC/DME I-OJP	APP CRS	Rwy Idg	11601
110.7	005°	TDZE	92
Chan 44		Apt Elev	96

ILS or LOC RWY 36R

ORLANDO INTL (MCO)

RADAR required for procedure entry. DME or RADAR required.		ALSF-2	MISSED APPROACH: Climb to 500 then climbing left turn to 3000 on heading 309° and ORL VORTAC R-248 to DNMOR/ORL 6 DME and hold, continue climb-in-hold to 3000.
Simultaneous approach authorized.			

D-ATIS	ORLANDO APP CON	ORLANDO TOWER	GND CON	CLNC DEL	CPDLC
ARR 121.25	124.8 307.0	118.45 253.5 (Rwys 17L-35R, 17R-35L) 124.3 253.5 (Rwys 18L-36R, 18R-36L)	126.4 (East) 121.8 (West)	134.7 341.7	
DEP 120.525					



ELEV 96		TDZE 92	D	
500 3000		hdg 309°	DNMOR ORL 6	
VGSi and ILS glidepath not coincident (VGSi Angle 3.00°/TCH 70).		SILKY I-OJP 11.1		FLOZY I-OJP 14.2
JAKOR I-OJP 6.7		R-248		TRAMP I-OJP 16.8
I-OJP 2.1		I-OJP 3		I-OJP 3.9
0.9 NM		0.9 NM		2.8 NM
CATEGORY A		B		C
S-ILS 36R		292/18		200 (200-½)
S-LOC 36R		540/24		448 (500-½)
CIRCLING		740-1		644 (700-1)
S-LOC 36R		440/24		348 (400-½)
CIRCLING		740-1		644 (700-1)