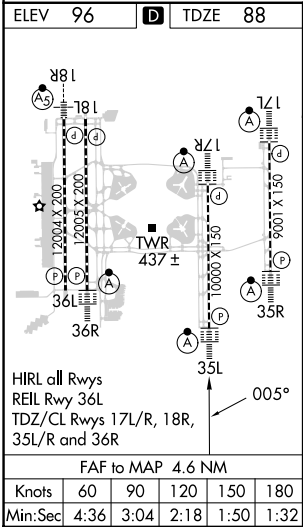
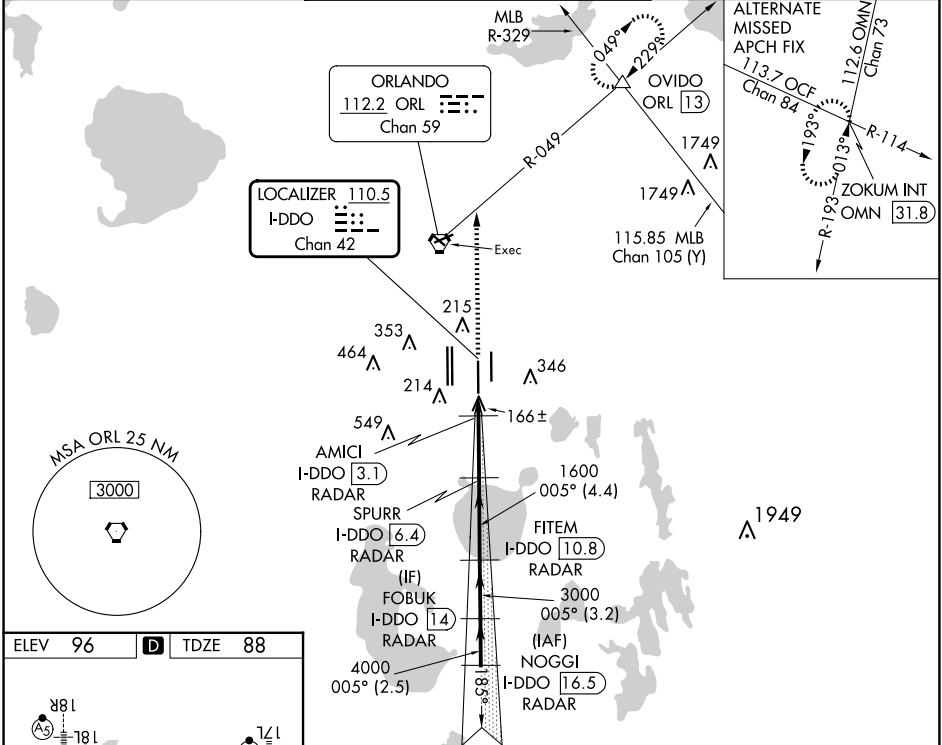


LOC/DME I-DDO	APP CRS	Rwy Idg	10000
110.5	005°	TDZE	88
Chan 42		Apt Elev	96

ILS or LOC RWY 35L

ORLANDO INTL (MCO)

RADAR required for procedure entry. DME or RADAR required.		ALSF-2	MISSED APPROACH: Climb to 3000 on heading 005° and ORL VORTAC R-049 to OVIDO INT/ORL 13 DME and hold.	
Bright lights on highway midway between Rwy 35L and Rwy 35R may be mistaken for runway lights. Simultaneous approach authorized. When using alternate missed approach, simultaneous approach NA.				
D-ATIS	ORLANDO APP CON	ORLANDO TOWER		GND CON
ARR 121.25	124.8 307.0	118.45 253.5 (Rwys 17L-35R, 17R-35L)		(East) 126.4
DEF 120.525		124.3 253.5 (Rwys 18L-36R, 18R-36L)		(West) 121.8
				CLNC DEL 134.7
				CPDLC 341.7



3000		hdg 005°	ORL R-049	OVIDO	VGSI and ILS glidepath not coincident (VGSI Angle 3.00/TCH 72).		NOGGI
							FOBUK I-DDO 16.5 RADAR
							FITEM I-DDO 10.8 RADAR
							SPURR I-DDO 6.4 RADAR
							AMICI I-DDO 3.1 RADAR
							I-DDO 1.8
							540
							1600
							3000
							4000
							5000
							GS 3.00° TCH 57
							1.3 NM
							3.3 NM
							4.4 NM
							3.2 NM
							2.5 NM
CATEGORY		A		B		C	
S-ILS 35L		288/18		200 (200-½)			
S-LOC 35L		420/24		332 (400-½)		420/26 332 (400-½)	
CIRCLING		740-1		644 (700-1)		740-1¾ 644 (700-1¾)	
						740-2 644 (700-2)	