

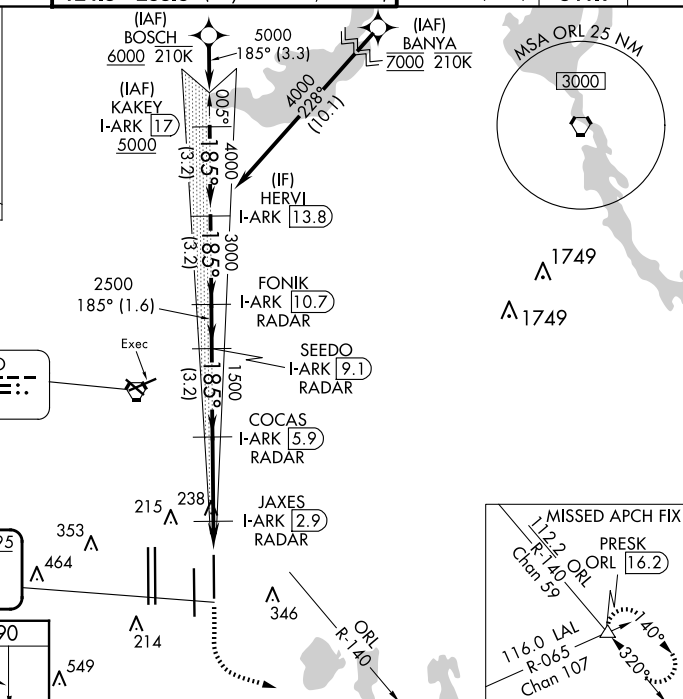
ILS or LOC RWY 17L
ORLANDO INTL (MCO)

MISSED APPROACH: Climb to 500 then climbing left turn to 3000 on heading 100° and ORL VORTAC R-140 to PRESK INT/ORL 16.2 DME and hold, continue climb-in-hold to 3000.

A

Diagram illustrating the intersection of the Presk Main Landing Base (MLB) and the R-305 route. The diagram shows the intersection point, the R-305 route, and the Presk MLB. Key features include:

- Intersection Point:** Marked with a triangle.
- Navigation Aids:**
 - R-305:** Route identifier.
 - 116.0 LAL:** Localizer frequency.
 - R-065:** Route identifier.
 - Chan 107:** Channel 107.
 - 115.85 MLB:** Main Landing Base frequency.
 - Chan 105 (Y):** Channel 105 (Y).
- Angles:**
 - 125°:** Angle between R-305 and 116.0 LAL.
 - 305°:** Angle between R-305 and 115.85 MLB.
- Labels:**
 - ALTERNATE MISSED APCH FIX:** Alternate missed approach fix.
 - PRESK MLB:** Presk Main Landing Base.
 - 30:** A boxed number, likely a distance or time.



FAF to MAP 4.3 NM

BOSCH
KAKEY
I-ARK 17
HERVI
I-ARK 13.8
FONIK
I-ARK 10.7
SEEDO
I-ARK 9.1
COCAS
I-ARK 5.9
JAXES
I-ARK 2.9
I-ARK 1.7

6000 185° 5000 4000 3000 2500 1500 540

GS 3.00° TCH 55

3.3 3.2 NM 3.2 NM 1.6 NM 3.2 NM 3 NM 1.3 NM

500
3000
ORL
R-140
PRESK
△

VGSI and ILS glidepath not coincident
(VGSI Angle 3.00/TCH 72).

CATEGORY	A	B	C	D
S-ILS 17L	290/18 200 (200-½)			
S-LOC 17L	500/24	410 (500-½)	500/40	410 (500-¾)
C CIRCLING	740-1	644 (700-1)	740-1¾ 644 (700-1¾)	740-2 644 (700-2)