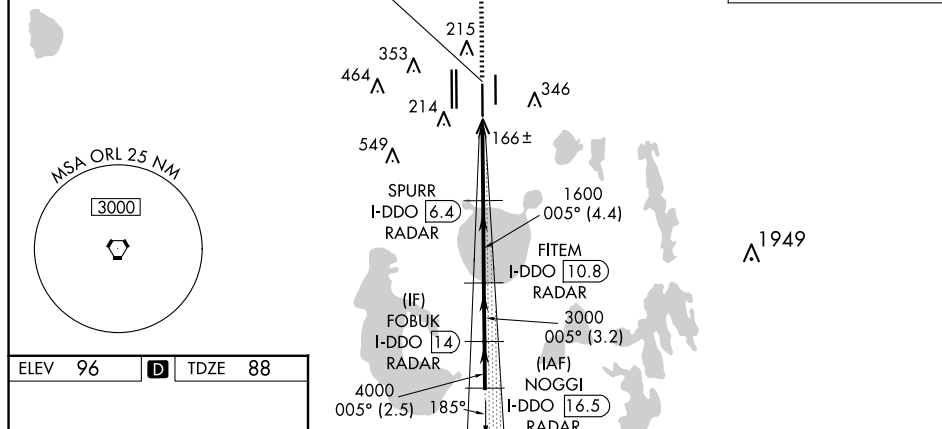


24249

ILS RWY 35L (CAT II & III)
ORLANDO INTL (MCO)

ALSF-2

MISSED APPROACH: Climb to 3000 on heading 005° and ORL VORTAC R-049 to OVIDO INT/ORL 13 DME and hold.

[illegible]

ORLANDO INTL (MCO)
ILS RWY 35L (CAT II & III)

SE-3, 10 JUL 2025 to 07 AUG 2025