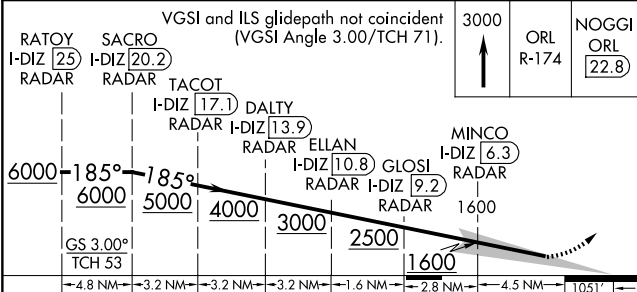
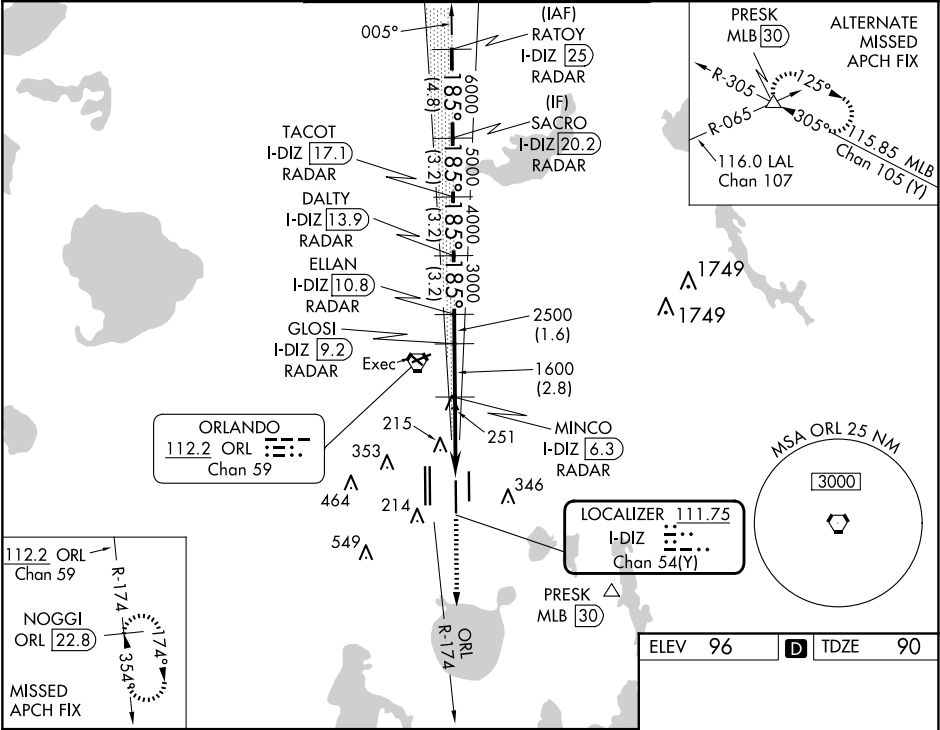


LOC/DME I-DIZ	APP CRS	Rwy Idg
<b>111.75</b>	<b>185°</b>	<b>10000</b>
Chan <b>54</b> (Y)		TDZE <b>90</b>
		Apt Elev <b>96</b>

ILS RWY 17R (CAT II)  
ORLANDO INTL (MCO)

RADAR required for procedure entry. DME or RADAR required.			ALS F-2		MISSED APPROACH: Climb to 3000 on ORL VORTAC R-174 to NOGGI/ ORL 22.8 DME and hold.	
Simultaneous approach authorized. When using alternate missed approach, simultaneous approach NA. Bright lights on highway midway between Rwy 17L and Rwy 17R may be mistaken for runway lights.						
D-ATIS ARR <b>121.25</b> DEP <b>120.525</b>	ORLANDO APP CON <b>124.8 307.0</b>	ORLANDO TOWER <b>118.45 253.5</b> (Rwys 17L-35R, 17R-35L) <b>124.3 253.5</b> (Rwys 18L-36R, 18R-36L)		GND CON <b>126.4</b> (East) <b>121.8</b> (West)	CLNC DEL <b>134.7</b> <b>341.7</b>	CPDLC



CATEGORY	A	B	C	D
S-ILS 17R	RA 104/12	100	DA 190	
CATEGORY II ILS - SPECIAL AIRCREW & AIRCRAFT CERTIFICATION REQUIRED				

