

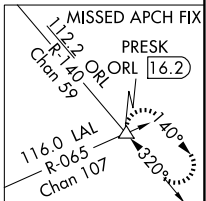
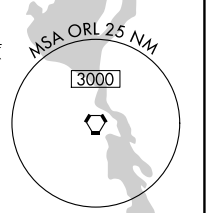
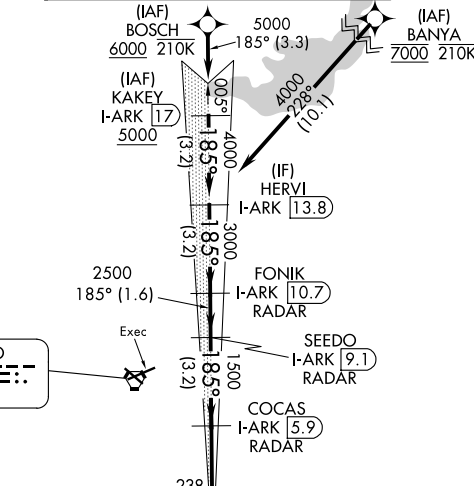
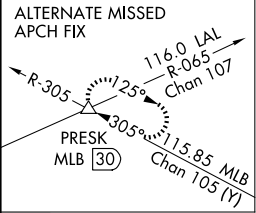
LOC/DME I-ARK	APP CRS	Rwy Idg	9001
110.95	185°	TDZE	90
Chan 46(Y)		Apt Elev	96

ILS RWY 17L (CAT II & III)
ORLANDO INTL (MCO)

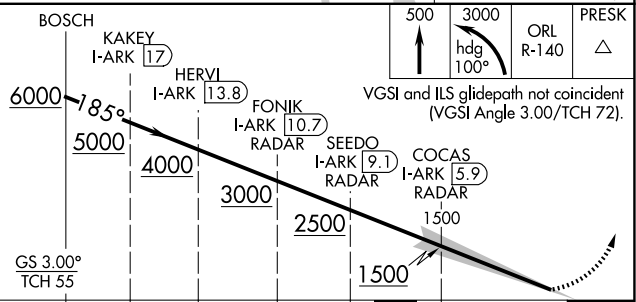
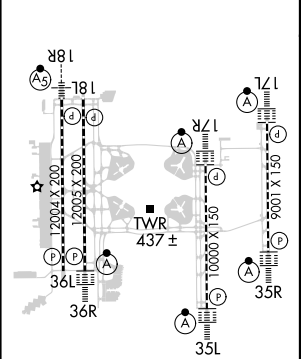
RNAV 1-DME/DME/IRU or GPS or RADAR required for procedure entry.
DME or RADAR required.

ALSF-2
MISSED APPROACH: Climb to 500 then climbing left turn to 3000 on heading 100° and ORL VORTAC R-140 to PRESK INT/ORL 16.2 DME and hold, continue climb-in-hold to 3000.

D-ATIS ARR 121.25 DEP 120.525	ORLANDO APP CON 124.8 307.0	ORLANDO TOWER 118.45 253.5 (Rwys 17L-35R, 17R-35L) 124.3 253.5 (Rwys 18L-36R, 18R-36L)	GND CON 126.4 (East) 121.8 (West)	CLNC DEL 134.7 341.7	CPDLC
---	---------------------------------------	--	---	--	-------



ELEV 96	D	TDZE 90
---------	---	---------



CATEGORY	A	B	C	D
S-ILS 17L	CAT II RA 101/12 100 DA 190			
S-ILS 17L	CAT III RVR 06			

CATEGORY II & III ILS - SPECIAL AIRCREW
& AIRCRAFT CERTIFICATION REQUIRED