

WAAS
CH **70326**
W32A

APP CRS
325°

Rwy Ldg
TDZE
Apt Elev

7466
1124
1203

RNAV (GPS) Y RWY 32

PITTSBURGH INTL (PIT')

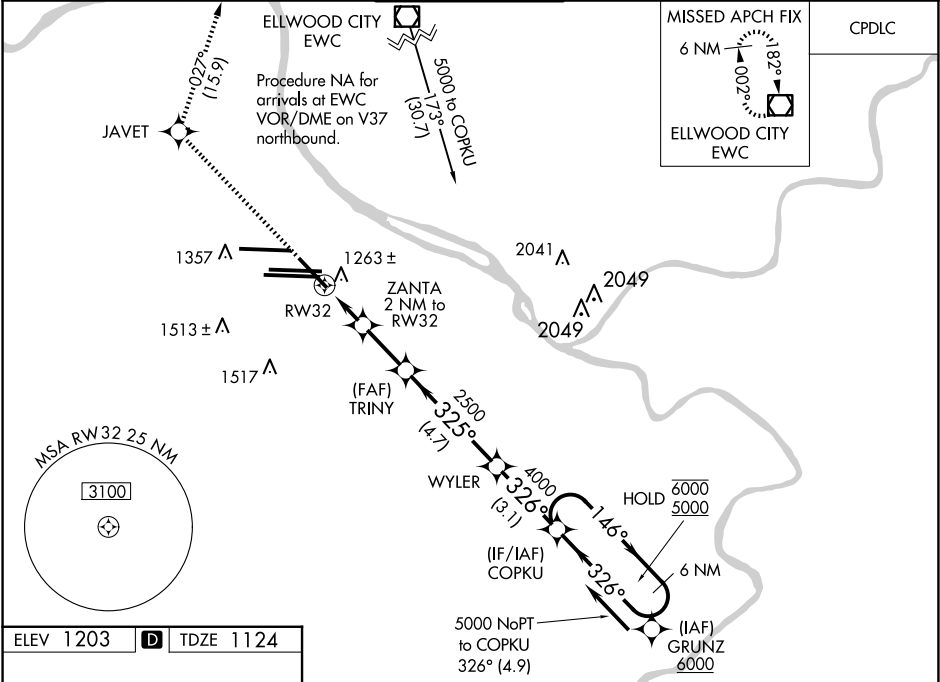
RNP APCH - GPS.

▼ For uncompensated Baro-VNAV systems, LNAV/VNAV NA below -18°C (0°F) or above 54°C (130°F). Inop table does not apply to LPV. For inop ALS, increase LNAV/VNAV all Cats visibility to RVR 4500.

MALS
A4=

MISSED APPROACH: Climb to 4000 direct JAVET and on track 027° to EWC VOR/DME and hold.

D-ATIS ARR 127.25 DEP 135.9	PITTSBURGH APP CON 123.95 360.8	PITTSBURGH TOWER 128.3 291.7	GND CON SOUTH 121.9 348.6 NORTH 127.8 348.6	CLNC DEL 126.75 353.7
---	---	--	---	---------------------------------



REIL Rwy 10C
HIRL all Rwys
TDZ/CL Rwys 10L, 10R, 28L, 28R,
28C, and 32

4000 JAVET EWC

↑ tr 027°

VGSI and RNAV glidepath not coincident (VGSI Angle 3.00/TCH 72).

6 NM Holding Pattern

WYLER

ZANTA 2 NM to RW32

TRINY

1 NM to RW32

RW32

1780 2500

325° 326° 146°

4000 6000 5000

GP 3.00° TCH 37

CATEGORY	A	B	C	D
LPV DA	1324/40 200 (200-¾)			
LNAV/VNAV DA	1438/40 314 (300-¾)			
LNAV MDA	1520/40 396 (400-¾)		1520/45 396 (400-¾)	
CIRCLING	1700-1 497 (500-1)		1880-2 677 (700-2)	1880-2 ¼ 677 (700-2 ¼)