

PITTSBURGH, PENNSYLVANIA

AL-570 (FAA)

25163

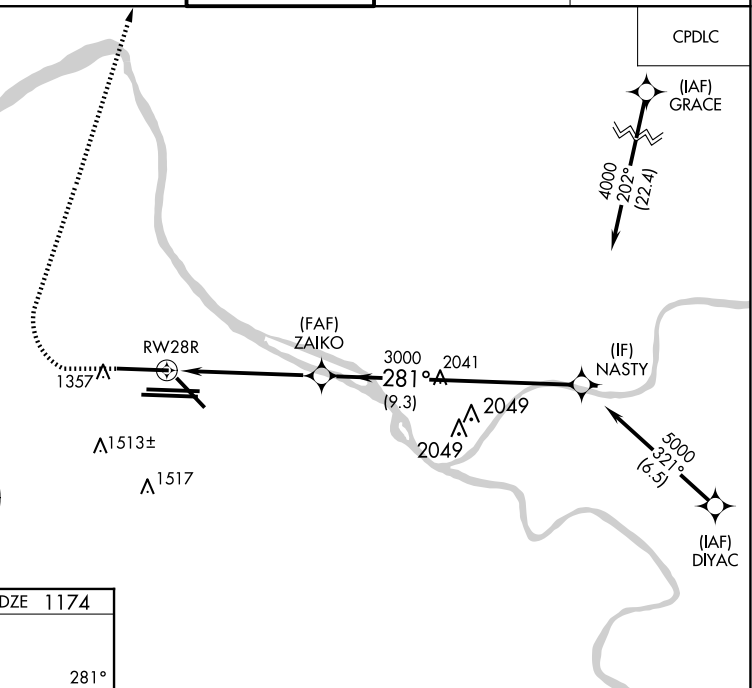
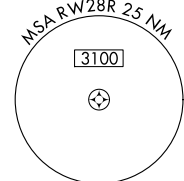
WAAS CH <b>40027</b> <b>W28D</b>	APP CRS <b>281°</b>	Rwy Ldg TDZE Apt Elev	<b>10102</b> <b>1174</b> <b>1203</b>
--	------------------------	-----------------------------	--

RNAV (GPS) Y RWY 28R  
PITTSBURGH INTL (PIT)

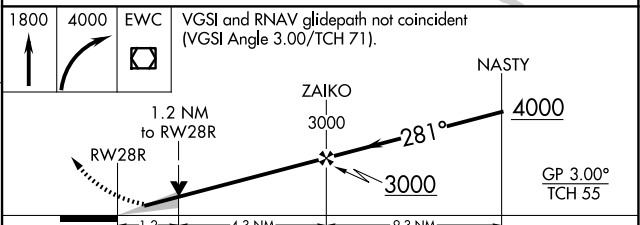
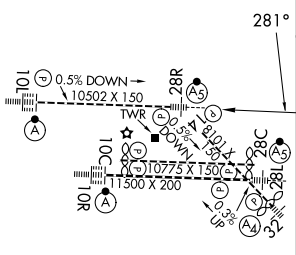
RNP APCH - GPS.

**⚠** Circling Rwy 14 NA at night. Simultaneous approach authorized. For uncompensated Baro-VNAV systems, LNAV/VNAV NA below -18°C or above 54°C. For inop ALS, increase LNAV Cats C/D visibility to 1½ SM. LNAV procedure NA during simultaneous operations. Use of FD or AP required during simultaneous operations.

D-ATIS			GND CON	
ARR <b>127.25</b>	PITTSBURGH APP CON	PITTSBURGH TOWER	SOUTH <b>121.9 348.6</b>	CLNC DEL
DEP <b>135.9</b>	<b>123.95 360.8</b>	<b>128.3 291.7</b>	NORTH <b>127.8 348.6</b>	<b>126.75 353.7</b>



ELEV 1203	<b>D</b>	TDZE 1174
-----------	----------	-----------



CATEGORY	A	B	C	D
LPV DA	1374/18 200 (200-½)			
LNAV/ VNAV DA	1629/45 455 (500-¾)			
LNAV MDA	1640/24 466 (500-½)		1640/50 466 (500-1)	
<b>C</b> CIRCLING	1700-1 497 (500-1)		1880-2 677 (700-2)	1880-2¼ 677 (700-2¼)

REIL Rwy 10C  
HIRL all Rwys  
TDZ/CL Rwys 10L, 10R, 28L, 28R,  
28C and 32

PITTSBURGH, PENNSYLVANIA

Amdt 6 10AUG23

40°29'N-80°14'W

RNAV (GPS) Y RWY 28R

NE-4, 10 JUL 2025 to 07 AUG 2025