


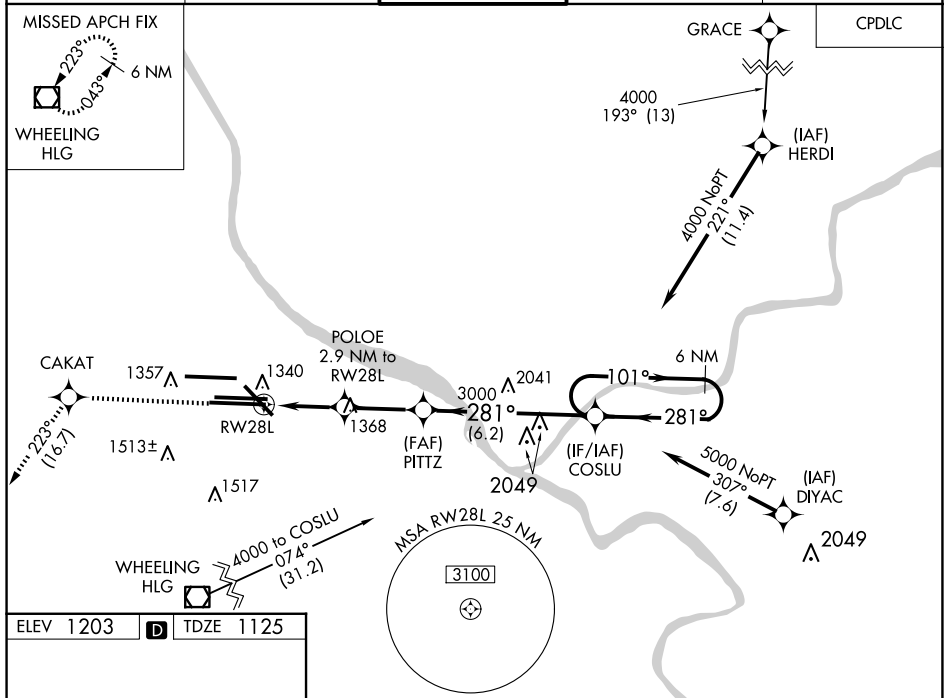


WAAS CH 97326 W28B	APP CRS 281°	Rwy Ldg 11500 TDZE 1125 Apt Elev 1203
--	------------------------	--

RNAV (GPS) Y RWY 28L

PITTSBURGH INTL (PIT)

RNP APCH - GPS.  For uncompensated Baro-VNAV systems, LNAV/VNAV NA below -18°C or above 54°C. For inop ALS, increase LNAV Cats C/D visibility to 1% SM.  LNAV procedure NA during simultaneous operations. Use of FD or AP required during simultaneous operations.			MALSR 	MISSED APPROACH: Climb to 4000 direct CAKAT and on track 223° to HLG VOR/DME and hold.
D-ATIS ARR 127.25 DEP 135.9	PITTSBURGH APP CON 123.95 360.8	PITTSBURGH TOWER 128.3 291.7	GND CON SOUTH 121.9 348.6 NORTH 127.8 348.6	CLNC DEL 126.75 353.7



The diagram illustrates the RW28L holding pattern and its integration with the RNAV glidepath. Key features include:

- Holding Pattern:** A standard racetrack pattern around RW28L. The inbound leg is 1.3 NM long, followed by two turns (left and right) and an outbound leg of 1.6 NM.
- Navigation Aids:** The pattern is defined by DME arcs (10.502 X 150, 10.775 X 150, 11.500 X 200) and VORTAC stations (A, B, C, D).
- Glidepath Information:** The RNAV glidepath starts at 3000 feet and descends to 2080 feet at the RW28L fix. The final segment of the glidepath is GP 3.00° TCH 54.
- Obstacles:** Obstacle symbols are shown near the holding pattern, with some labeled with their MSL and AGL heights (e.g., 28R, 28C, 28B, 28A).