

25163

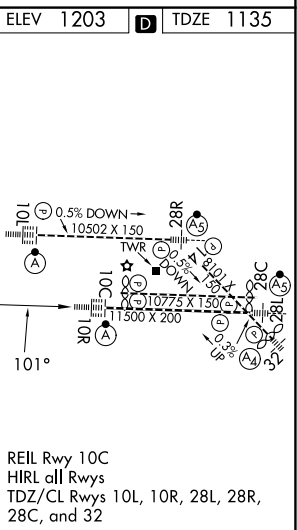
RNAV (GPS) Y RWY 10R  
PITTSBURGH INTL (PIT)

**MISSED APPROACH:** Climb to 4000 direct DITPE and right turn on track 168° to GUZIT and hold.

**T** For uncompensated Baro-VNAV systems, LNAV/VNAV NA below -17°C or above 54°C. Simultaneous approach authorized. LNAV procedure NA during simultaneous operations. Use of FD or AP required during simultaneous operations.

CPDLC

CATEGORY	A	B	C	D
LPV DA	1335/18		200 (200-½)	
LNAV/ VNAV DA	1658/55		523 (500-1)	
LNAV MDA	1660/24	525 (500-½)	1660/55	525 (500-1)
<b>C</b> CIRCLING	1700-1	497 (500-1)	1880-2 677 (700-2)	1880-2¼ 677 (700-2¼)



PITTSBURGH INTL (PIT)  
RNAV (GPS) Y RWY 10R

NE-4, 10 JUL 2025 to 07 AUG 2025