

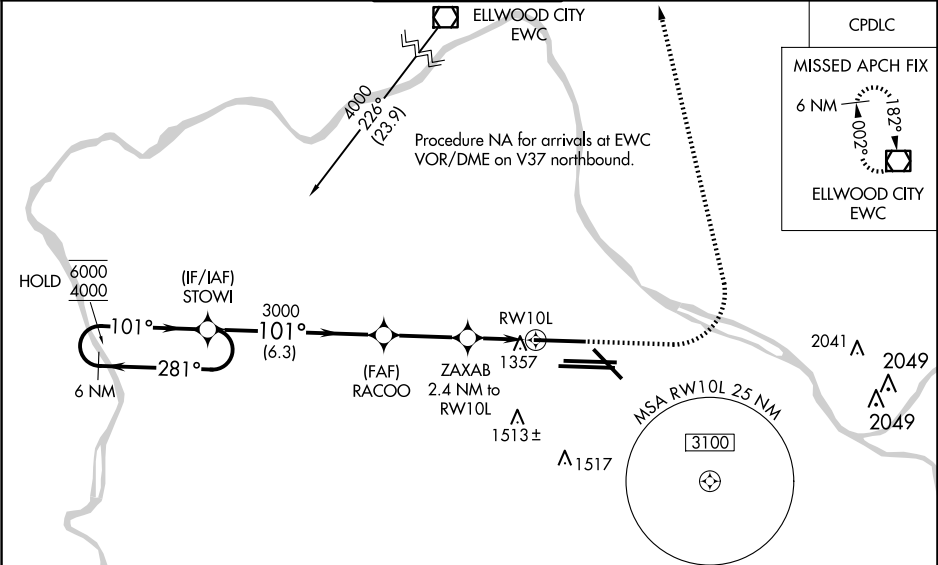
WAAS CH 81826 W10B	APP CRS 101°	Rwy Ldg TDZE Apt Elev	10502 1203 1203
--	------------------------	-----------------------------	--

RNAV (GPS) RWY 10L

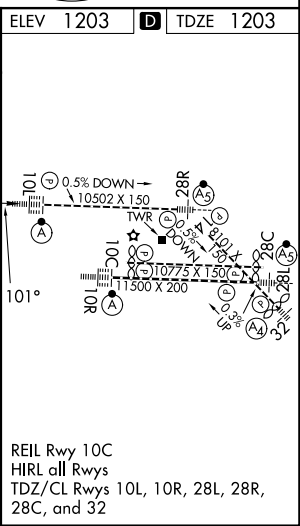
PITTSBURGH INTL (PIT)

RNP APCH - GPS.	ALSF-2	MISSED APPROACH: Climb to 1900 then climbing left turn to 4000 direct EWC VOR/DME and hold.
Simultaneous approach authorized. For uncompensated Baro-VNAV systems, LNAV/VNAV NA below -17°C or above 54°C. LNAV procedure NA during simultaneous operations. Use of FD or AP required during simultaneous operations. For inop ALS, increase LNAV Cats C/D visibility to RVR 6000.		

D-ATIS ARR 127.25 DEP 135.9	PITTSBURGH APP CON 123.95 360.8	PITTSBURGH TOWER 128.3 291.7	GND CON SOUTH 121.9 348.6 NORTH 127.8 348.6	CLNC DEL 126.75 353.7
---	---	--	---	---------------------------------



VGSI and RNAV glidepath not coincident (VGSI Angle 3.00/TCH 83).		ELEV 1203		TDZE 1203	
6 NM Holding Pattern		1900		4000	
GP 3.00° TCH 59		EWC			
STOWI		RACOO		ZAXAB	
3000		3000		2.4 NM to RW10L	
101°		101°		1 NM to RW10L	
281°		281°		RW10L	
6.3 NM		3 NM		1.4 NM	
1 NM		1 NM		1 NM	
CATEGORY	A	B	C	D	
LPV DA	1403/18		200 (200-½)		
LNAV/VNAV DA	1635/40		432 (500-¾)		
LNAV MDA	1620/24	417 (500-½)	1620/40	417 (500-¾)	
CIRCLING	1700-1	497 (500-1)	1880-2	1880-2¼	677 (700-2¼)



NE-4, 10 JUL 2025 to 07 AUG 2025

NE-4, 10 JUL 2025 to 07 AUG 2025