

| | | | |
|-----------|---------|----------|-------|
| LOC I-HFE | APP CRS | Rwy Ldg | 10102 |
| 111.7 | 281° | TDZE | 1174 |
| | | Apt Elev | 1203 |

ILS or LOC RWY 28R

PITTSBURGH INTL (PIT)

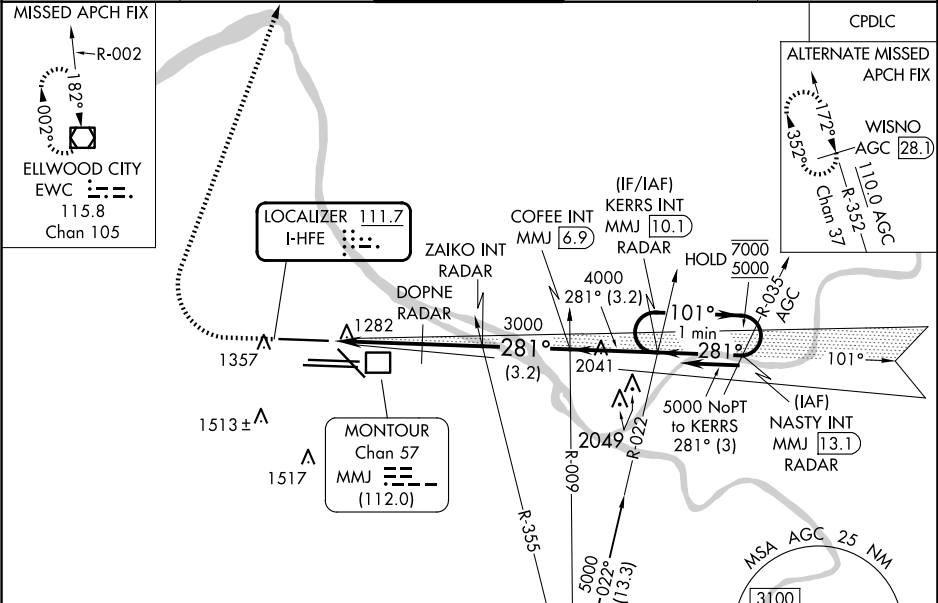
From NASTY: Radar required for procedure entry.
Radar required for LOC only.

MALSR

MISSED APPROACH: Climb to 1800 then climbing right turn to 5000 direct EWC VOR/DME and hold.

Simultaneous approach authorized. For inop ALS, increase S-ILS 28R Cat E visibility to RVR 4000 and S-LOC 28R Cats C/D/E visibility to RVR 5500. DME from MMJ DME. Simultaneous reception of I-HFE and MMJ DME required.

| | | | | |
|-------------------------|--------------------|------------------|--|--------------|
| D-ATIS | PITTSBURGH APP CON | PITTSBURGH TOWER | GND CON | CLNC DEL |
| ARR 127.25 DEP 135.9 | 123.95 360.8 | 128.3 291.7 | SOUTH 121.9 348.6 NORTH 127.8 348.6 | 126.75 353.7 |



| | | |
|-----------|---|-----------|
| ELEV 1203 | D | TDZE 1174 |
|-----------|---|-----------|

1800 5000 EWC

VGSI and ILS glidepath not coincident (VGSI Angle 3.00/TCH 71).

*LOC only.

One Minute Holding Pattern

REIL Rwy 10C
HIRL all Rwys
TDZ/CL Rwys 10L, 10R, 28L, 28R, 28C, and 32

GS 3.00°
TCH 55

FAF to MAP 5.6 NM

3.4 NM 2.2 NM 3.2 NM

| CATEGORY | A | B | C | D | E |
|-----------|---------------------|---------------------|----------------------|----------------------|---|
| S-ILS 28R | 1374/18 200 (200-½) | | | | |
| S-LOC 28R | 1540/24 366 (400-½) | 1540/35 366 (400-¾) | | | |
| CIRCLING | 1700-1 497 (500-1) | 1880-2 677 (700-2) | 1880-2¼ 677 (700-2¼) | 1880-2½ 677 (700-2½) | |