

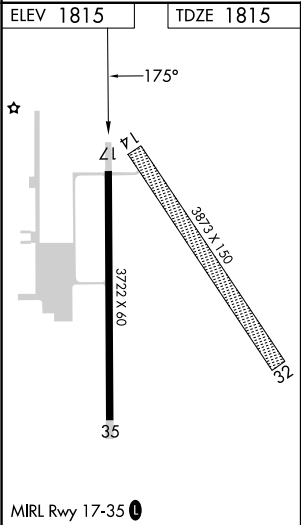
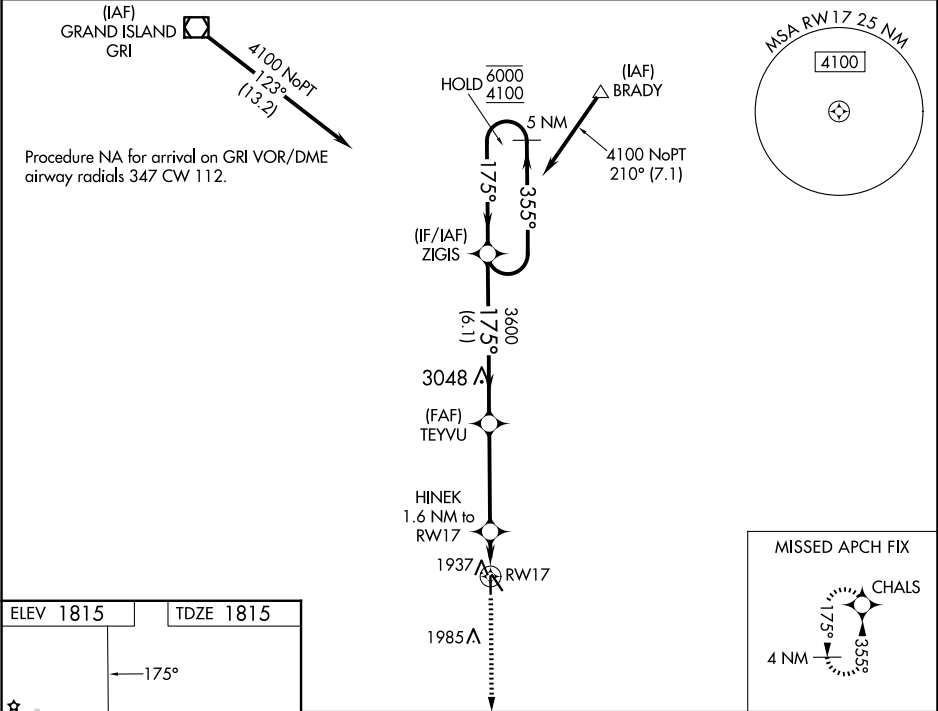
WAAS CH 99631 W17A	APP CRS 175°	Rwy Idg TDZE 1815 Apt Elev 1815
--	------------------------	---

RNAV (GPS) RWY 17

HARVARD STATE (Ø8K)

RNP APCH - GPS.	MISSED APPROACH: Climb to 4000 direct CHALS and hold.
<div><div>▼</div><div>▲ NA</div></div> <div>Rwy 17 helicopter visibility reduction below ¾ SM NA. Baro-VNAV NA. Use AUH altimeter setting; when not received, use GRI altimeter setting: increase LPV DA to 2121 feet and LNAV/VNAV DA to 2136 feet; increase all MDAs 20 feet.</div>	

AUH AWOS-3 121.225	MINNEAPOLIS CENTER 119.4 278.8	CTAF 122.90
------------------------------	--	-----------------------



5 NM Holding Pattern		ZIGIS	TEYVU	HINEK	RW17
6000 ← 355°		4100 → 175°	3600	1.6 NM to RW17	
GP 3.00° TCH 40		3600	2360		
		6.1 NM	3.9 NM	1.6 NM	
CATEGORY	A	B	C	D	
LPV DA	2102-1	287 (300-1)	NA		
LNAV/VNAV DA	2117-1	302 (400-1)	NA		
LNAV MDA	2280-1	465 (500-1)	NA		