

TACAN RWY 32

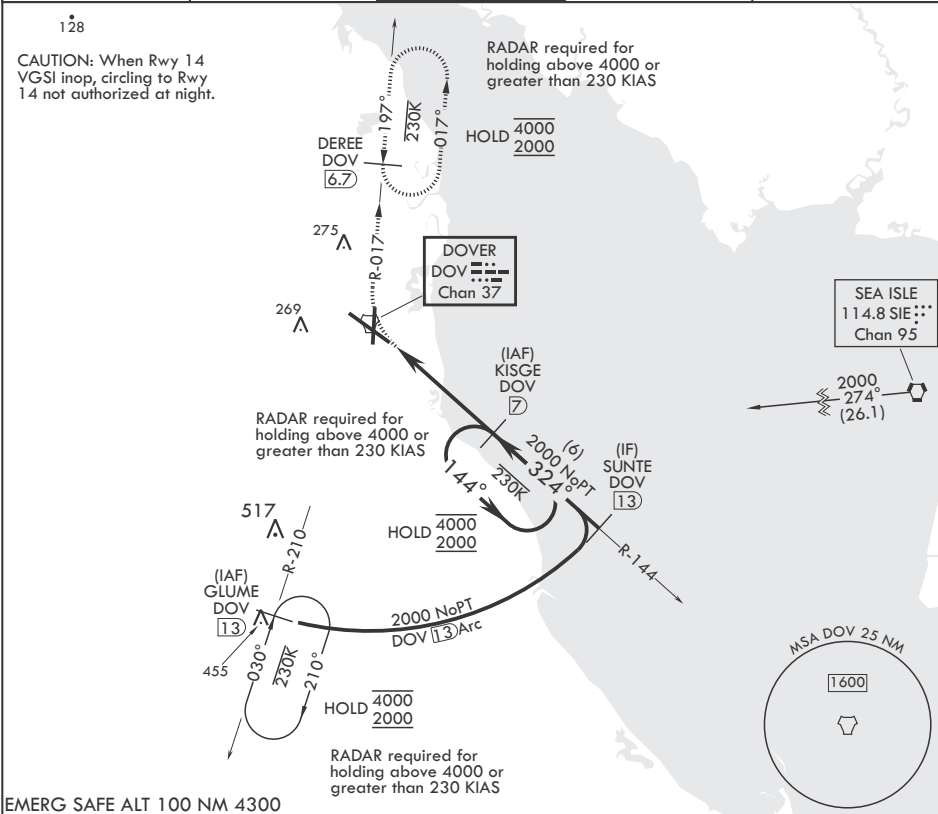
TACAN DOV Chan 37	APCH CRS 324°	Rwy Idg TDZE Arpt Elev	12,903 26 29
----------------------	------------------	------------------------------	--------------------

- (USAF)

DOVER AFB (KDOV)

<div><div></div><div>MISSED APPROACH: Climbing right turn to 2000, intercept DOV TACAN R-017 to DERE//DOV 6.7 DME and hold.</div></div>
---

ATIS 127.825 273.5	APP CON 132.425 257.875	TOWER 126.35 279.625	GND CON 118.875 225.4	CLNC DEL 125.55 289.4
-----------------------	----------------------------	-------------------------	--------------------------	--------------------------



2000 DOV R-017		DERE DOV 6.7		VGSI and descent angles not coincident (VGSI Angle 2.93/TCH 69)		ELEV 29		TDZE 26	
DOV TACAN		DUTSE DOV 1.5		DOV 2.4		KISGE DOV 7		One Minute Holding Pattern	
324°		324°		324°		144°		4000 2000	
.3		5.5 NM		≤ 3.11° TCH 55					
CATEGORY	A	B	C	D	E				
S-32	460-1	434 (500-1)	460-1½	434 (500-1½)					
CIRCLING	540-1	511 (600-1)	620-1½ 591 (600-1½)	620-2 591 (600-2)	1080-3 1051 (1100-3)				
DOVER, DELAWARE						DOVER AFB (KDOV)			
Amdt 6 26DEC24						TACAN RWY 32			

TACAN RWY 32

NE-3, 10 JUL 2025 to 07 AUG 2025

NE-3, 10 JUL 2025 to 07 AUG 2025