

DOVER, DELAWARE

RNAV (GPS) RWY 32

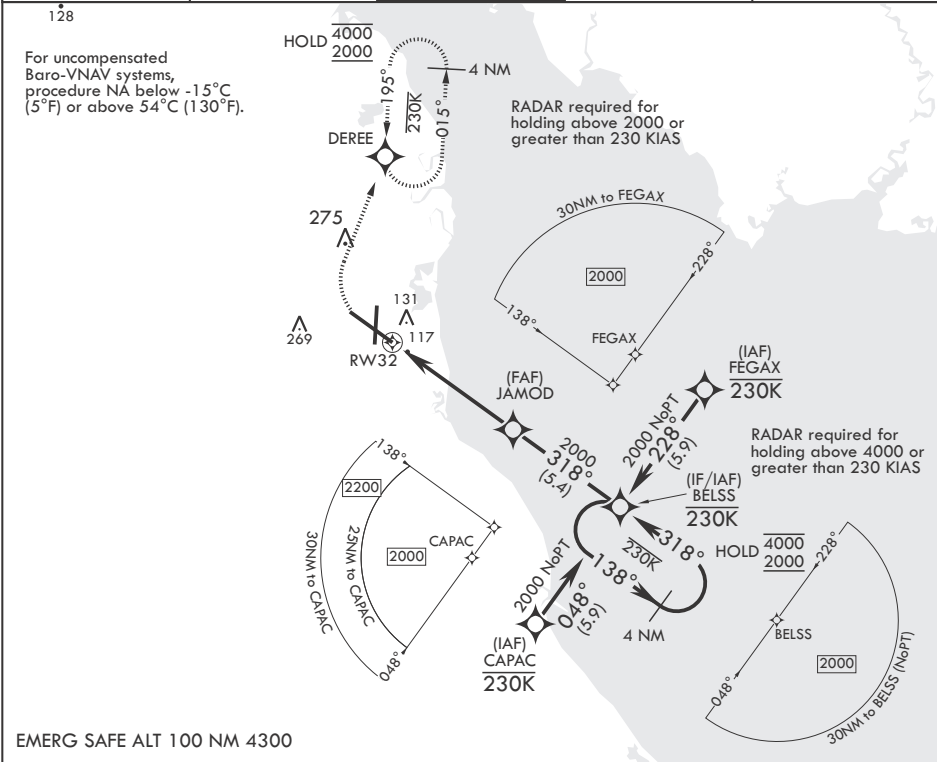
WAAS CH 91360 W32A	APCH CRS 318°	Rwy ldg TDZE 26	12,903
		Arpt Elev	29

(USAF)

DOVER AFB (KDOV)

RNP APCH-GPS	MISSED APPROACH: (Do not exceed 230 KIAS) Climb to 600 then climbing right turn to 2000 direct DEREE and hold.
--------------	--

ATIS 127.825 273.5	APP CON 132.425 257.875	TOWER 126.35 279.625	GND CON 118.875 225.4	CLNC DEL 125.55 289.4
-----------------------	----------------------------	-------------------------	--------------------------	--------------------------



600	2000	DEREE	VGSI and RNAV glidepath not coincident (VGSI Angle 2.93/TCH 69).	ELEV 29	TDZE 26
crs 318°				Rwy 14 ldg 8652'	
			4 NM Holding Pattern		
			JAMOD BELSS 138° 4000 2000 318° 2000		
			GP 3.00° TCH 55		
			6 NM		
CATEGORY	A	B	C	D	
LPV DA	226-¾	200	(200-¾)		
LNAV/VNAV DA	277-¾ 251 (300-¾)	316-7/8 290 (300-7/8)	326-7/8 300 (300-7/8)		
LNAV MDA	460-1 434 (500-1)	460-1¼ 434 (500-1¼)	620-2 591 (600-2)		
CIRCLING	540-1 511 (600-1)	620-1½ 591 (600-1½)	591 (600-2)		

DOVER, DELAWARE

39°08'N - 75°28'W

DOVER AFB (KDOV)

Amtd 6 26DEC24

RNAV (GPS) RWY 32

NE-3, 10 JUL 2025 to 07 AUG 2025

NE-3, 10 JUL 2025 to 07 AUG 2025