

WAAS CH 52208 W19A	APCH CRS 195°	Rwy Idg 9602 TDZE 23 Arpt Elev 29
--	-------------------------	--

ILS or LOC or RNAV (GPS) RWY 19

[USAF]

DOVER AFB (KDOV)

RNP APCH: RNAV1 - GPS or RADAR required for ILS, LOC

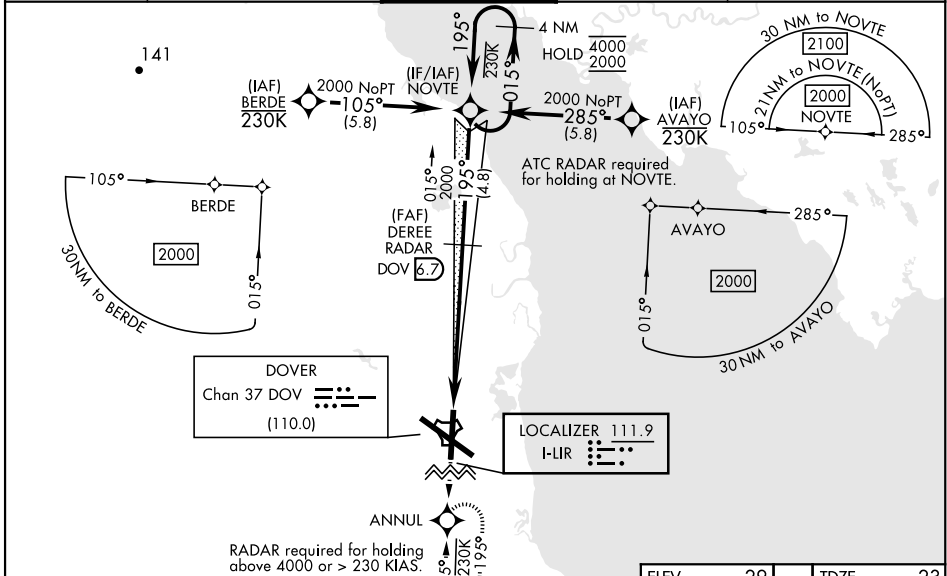
- * When ALS inop, increase RVR to 40, vis to $\frac{3}{4}$ mile.
RVR of 18 authorized with use of FD or AP or HUD to DA.
- ** When ALS inop, increase CAT AB RVR to 55, vis to 1 mile,
CAT CDE vis to $\frac{1}{8}$ miles.
- *** When ALS inop, increase CAT AB RVR to 55, vis to 1 mile,
CAT CD vis to $\frac{1}{8}$ miles.



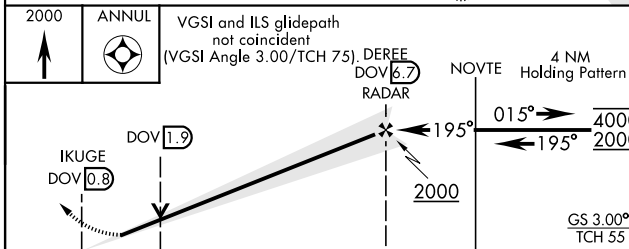
MISSED APPROACH: Climb to 2000 direct ANNUL and hold.

ALTERNATE MISSED APPROACH: Fly runway heading, climb and maintain 2000, expect radar vectors from ATC.

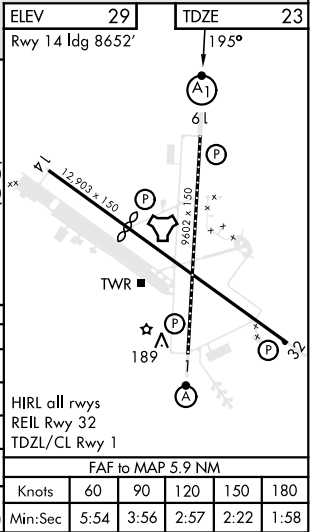
ATIS 127.825 273.5	APP CON 132.425 257.875	TOWER 126.35 279.625	GND CON 118.875 225.4	CLNC DEL 125.55 289.4
------------------------------	-----------------------------------	--------------------------------	---------------------------------	---------------------------------



EMERG SAFE ALT 100 NM 4300



CATEGORY	A	B	C	D	E
S-ILS 19*	223/24		200	(200- $\frac{1}{2}$)	
LPV DA*	223/24		200	(200- $\frac{1}{2}$)	NA
S-LOC 19**	480/24 457 (500- $\frac{1}{2}$)		480/45 457 (500- $\frac{7}{8}$)		
LNAV MDA***	480/24 457 (500- $\frac{1}{2}$)		480/45 457 (500- $\frac{7}{8}$)		NA
CIRCLING	540-1 511 (600-1)		620-1 $\frac{1}{2}$ 591 (600- $\frac{1}{2}$)	620-2 591 (600-2)	1080-3 1051 (1100-3)



ILS or LOC or RNAV (GPS) RWY 19