

DOVER, DELAWARE

ILS or LOC or RNAV (GPS) RWY 1

WAAS CH 52207 W01A	APCH CRS 015°	Rwy Idg 9602 TDZE 25 Arpt Elev 29
--	-------------------------	--

[USAF]

DOVER AFB (KDOV)

RNP APCH: RNAV1-GPS or RADAR required for ILS, LOC.

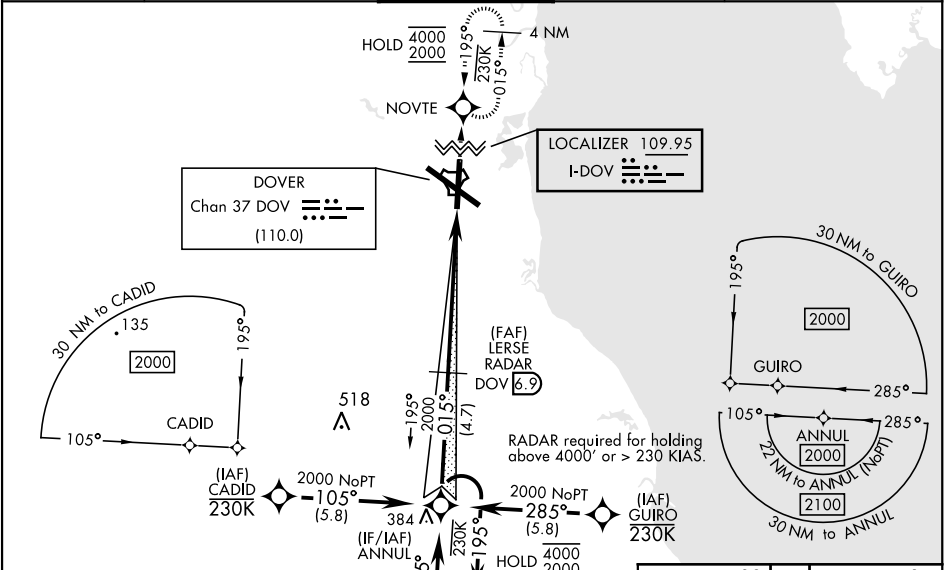
- ▼ * When TDZL/CL inop, increase RVR to 24, RVR of 18 authorized with use of FD or AP or HUD to DA.
When ALS inop, increase RVR to 40, vis to ¼ mile.
** When ALS inop, increase CAT AB RVR to 55, vis to 1 mile, CAT CDE vis to 1½ miles.
*** When ALS inop, increase CAT AB RVR to 55, vis to 1 mile, CAT CD vis to 1½ miles.



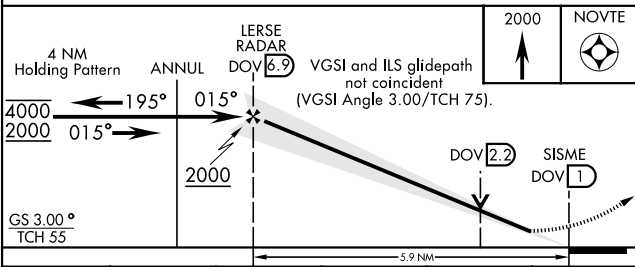
MISSED APPROACH: Climb to 2000 direct NOVTE and hold.

ALTERNATE MISSED APPROACH: Fly runway heading, climb and maintain 2000, expect radar vectors from ATC.

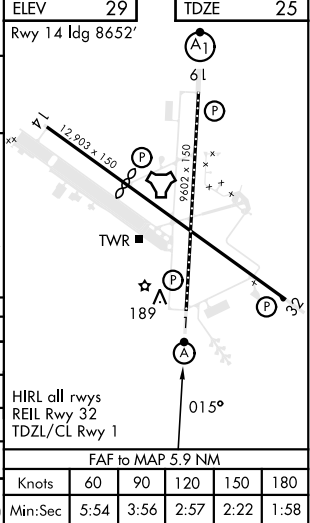
ATIS 127.825 273.5	APP CON 132.425 257.875	TOWER 126.35 279.625	GND CON 118.875 225.4	CLNC DEL 125.55 289.4
------------------------------	-----------------------------------	--------------------------------	---------------------------------	---------------------------------



EMERG SAFE ALT 100 NM 4300



CATEGORY	A	B	C	D	E
S-ILS 1*	225/18		200	(200-½)	
LPV DA*	225/18		200	(200-½)	
S-LOC 1**	500/24	475 (500-½)	500/50	475	(500-1)
LNAV MDA***	500/24	475 (500-½)	500/50	475 (500-1)	NA
CIRCLING	540-1	511 (600-1)	620-1½ 591 (600-1½)	620-2 591 (600-2)	1080-3 1051 (1100-3)



DOVER, DELAWARE

39°08'N-75°28'W

DOVER AFB (KDOV)

Amtd 2 26DEC24

ILS or LOC or RNAV (GPS) RWY 1

NE-3, 10 JUL 2025 to 07 AUG 2025

NE-3, 10 JUL 2025 to 07 AUG 2025