

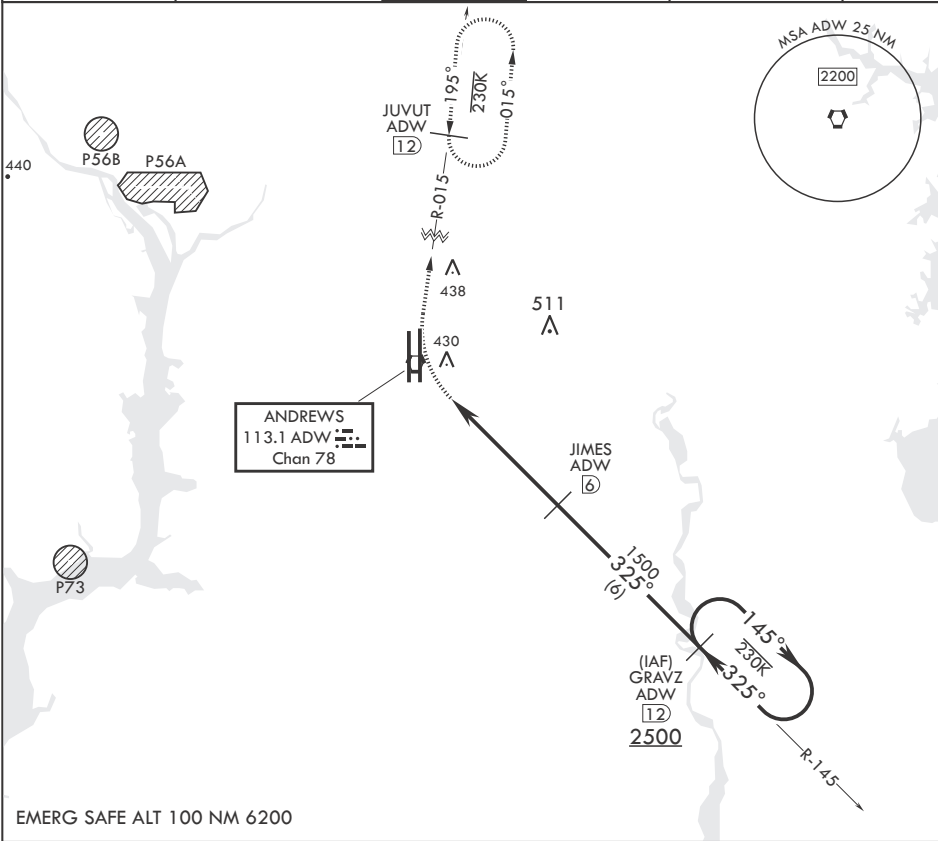
VORTAC ADW 113.1 Chan 78	APCH CRS 325°	Rwy Idg TDZE Arprt Elev	N/A N/A 280
--------------------------------	------------------	-------------------------------	-------------------

- (USAF)

JOINT BASE ANDREWS (ANDREWS AFB) (KADW)

RADAR required	MISSED APPROACH: Climbing right turn to 2500 via ADW R-015 to JUVUT and hold.
* Circling not authorized west of Rwy 1L-19R.	

ATIS 133.675 251.05	POTOMAC APP CON 128.0 335.5	TOWER 118.4 349.0	GND CON 121.8 275.8	CLNC DEL 127.55 285.475	CPDLC
------------------------	--------------------------------	----------------------	------------------------	----------------------------	-------



EMERG SAFE ALT 100 NM 6200

2500 ADW R-015	JUVUT ADW 12	GRAVZ ADW 12	145°	325°	2500
ADW VORTAC	JOLOS ADW 1.5	JAMES ADW 6	1500	325°	1500
4.5 NM					
CATEGORY	A	B	C	D	E
CIRCLING*	780-1¼ 500 (500-1¼)	780-1½ 500 (500-1½)	840-2 560 (600-2)		
ELEV 280					
BCN 483					
TWR 435					
HIRL all Rwys					
TDZL/CL Rwys 1L, 19R					

NE-3, 10 JUL 2025 to 07 AUG 2025

NE-3, 10 JUL 2025 to 07 AUG 2025