

TACAN RWY 1R

VORTAC ADW 113.1 Chan 78	APCH CRS 003°	Rwy Idg 9756 TDZE 265 Arpt Elev 280
--------------------------------	------------------	--

- (USAF)

JOINT BASE ANDREWS (ANDREWS AFB) (KADW)

RADAR required

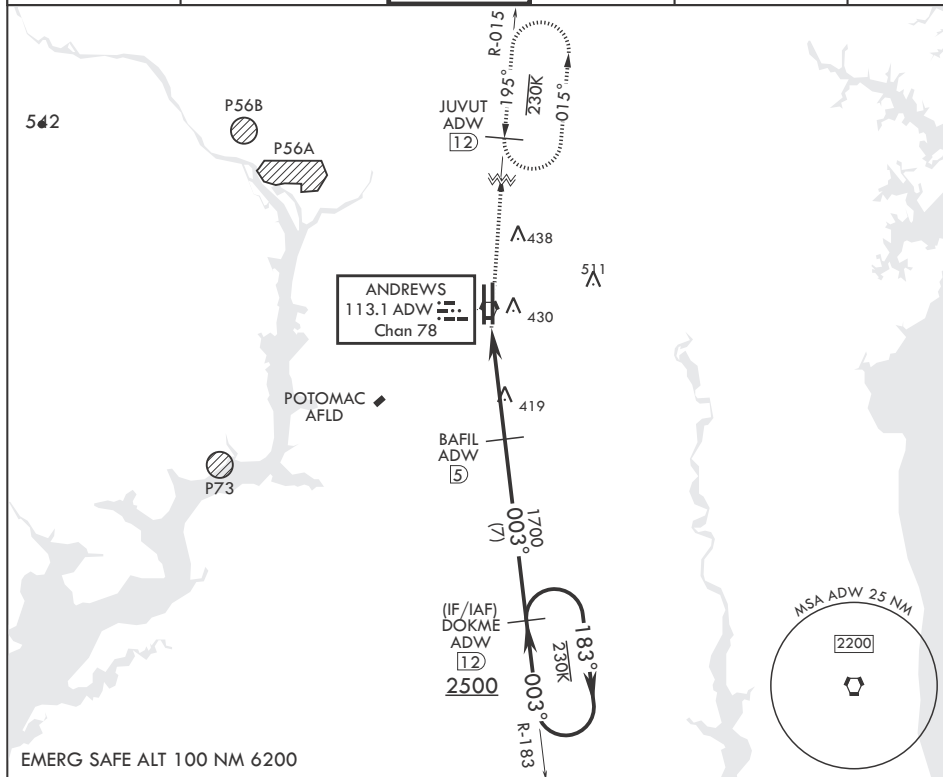
T * When ALS inop, increase CAT AB RVR to 55, vis to 1 mile, CAT CDE vis to 1 3/8 miles.

** Circling not authorized W of Rwy 1L-19R.

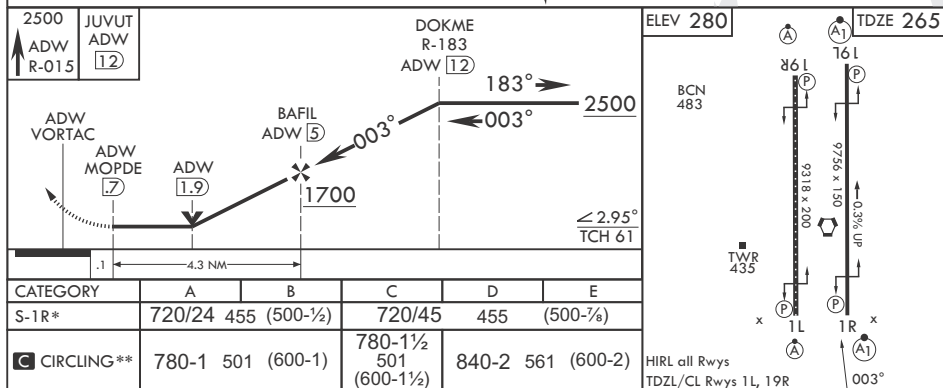
ALSF-1

R-015 to JUVUT and hold.

ATIS 133.675 251.05	POTOMAC APP CON 128.0 335.5	TOWER 118.4 349.0	GND CON 121.8 275.8	CLNC DEL 127.55 285.475	CPDLC
------------------------	--------------------------------	----------------------	------------------------	----------------------------	-------



EMERG SAFE ALT 100 NM 6200



CAMP SPRINGS, MARYLAND

38°49'N - 76°52'W JOINT BASE ANDREWS (ANDREWS AFB) (KADW)

Amdt 3 18MAY23

TACAN RWY 1R

NE-3, 10 JUL 2025 to 07 AUG 2025

NE-3, 10 JUL 2025 to 07 AUG 2025