

CAMP SPRINGS, MARYLAND

TACAN RWY 1L

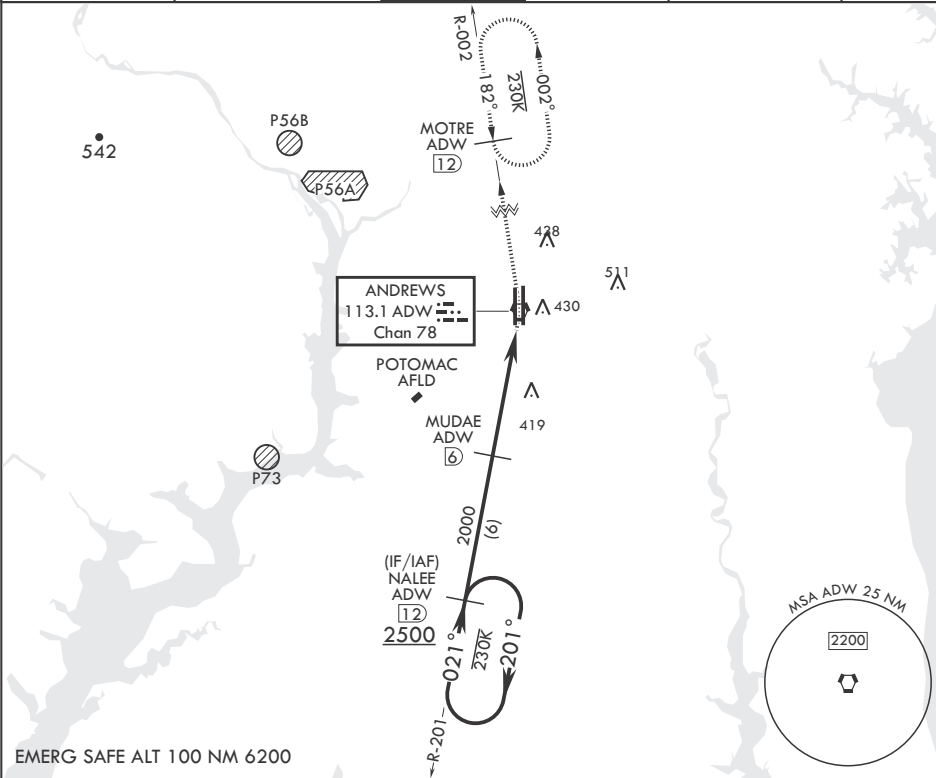
VORTAC ADW 113.1 Chan 78	APCH CRS 021°	Rwy Idg TDZE Arpt Elev	9318 261 280
--------------------------------	------------------	------------------------------	--------------------

- (USAF)

JOINT BASE ANDREWS (ANDREWS AFB) (KADW)

RADAR required	ALSF-2	MISSED APPROACH: Climb to 2500 via ADW VORTAC R-002 to MOTRE/ADW 12 DME and hold.
* When ALS inop, increase CAT AB RVR to 55, vis to 1 mile, CAT CDE vis to 1 3/8 miles. ** Circling not authorized W of Rwy 1L-19R.		

ATIS 133.675 251.05	POTOMAC APP CON 128.0 335.5	TOWER 118.4 349.0	GND CON 121.8 275.8	CLNC DEL 127.55 285.475	CPDLC
------------------------	--------------------------------	----------------------	------------------------	----------------------------	-------



NALEE R-201 ADW 12		2500		MOTRE ADW 12		ELEV 280		TDZE 261	
2500		2000		ADW VORTAC		ADW COSUR 1.8		ADW 1.8	
2.92° ≥ TCH 72		5.2 NM		.2					
CATEGORY	A	B	C	D	E				
S-1L*	720/24	459 (500-½)	720/45	459	(500-¾)				
CIRCLING**	780-1	501 (600-1)	780-1½	501 (600-1½)	840-2	561 (600-2)			

CAMP SPRINGS, MARYLAND

Amdt 2 18MAY23

38°49'N - 76°52'W JOINT BASE ANDREWS (ANDREWS AFB) (KADW)

TACAN RWY 1L

NE-3, 10 JUL 2025 to 07 AUG 2025

NE-3, 10 JUL 2025 to 07 AUG 2025