

CAMP SPRINGS, MARYLAND

TACAN RWY 19R

VORTAC ADW 113.1 Chan 78	APCH CRS 182°	Rwy Idg 9318 TDZE 274 Arpt Elev 280
--------------------------------	------------------	---

- (USAF)

JOINT BASE ANDREWS (ANDREWS AFB) (KADW)

RADAR required

T * When ALS inop, increase CAT AB RVR to 55, vis to 1 mile, CAT CDE vis to 1 3/8 miles.

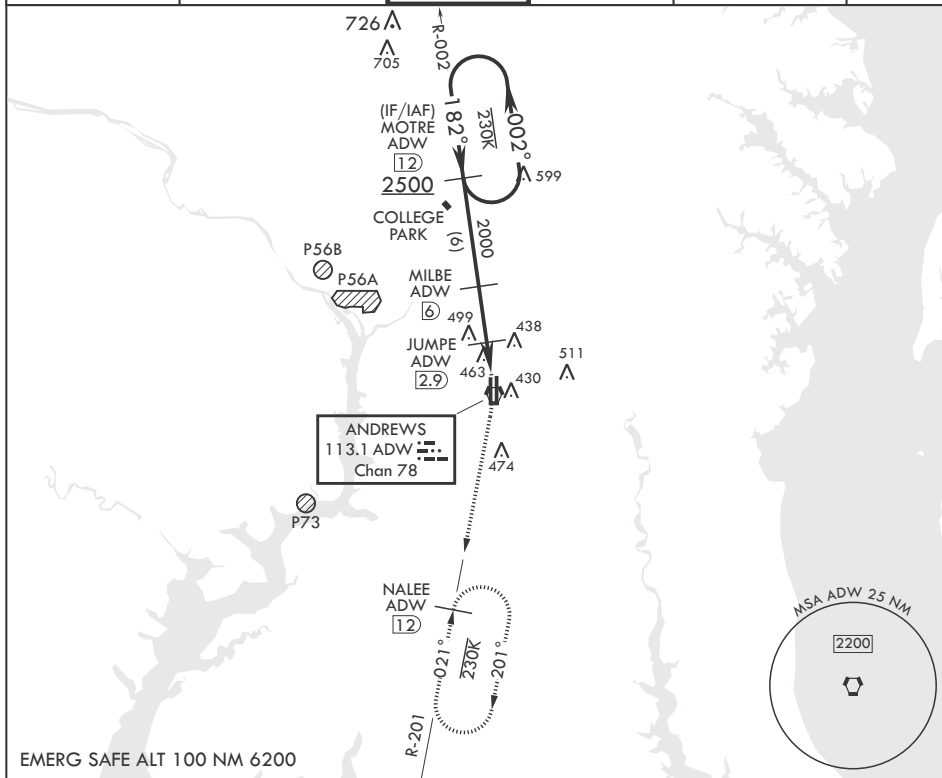
** Circling not authorized W of Rwy 1L-19R.

ALSF-2

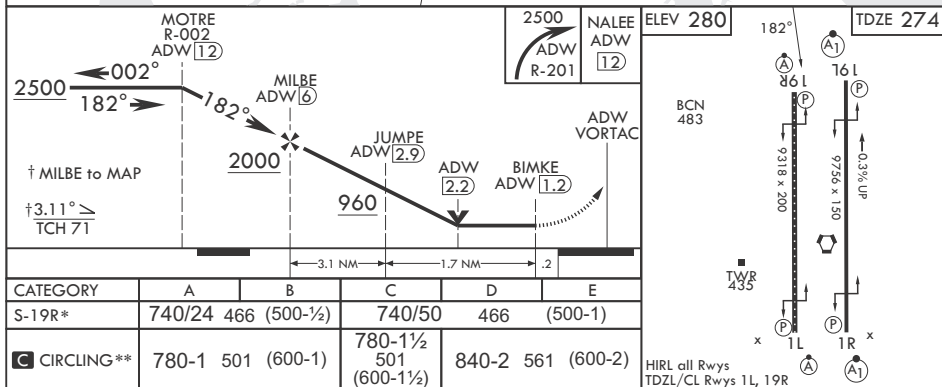


MISSED APPROACH: Climbing to 2500, intercept ADW VORTAC R-201 to NALEE and hold.

ATIS 133.675 251.05	POTOMAC APP CON 128.0 335.5	TOWER 118.4 349.0	GND CON 121.8 275.8	CLNC DEL 127.55 285.475	CPDLC
------------------------	--------------------------------	----------------------	------------------------	----------------------------	-------



EMERG SAFE ALT 100 NM 6200



CAMP SPRINGS, MARYLAND

38°49'N - 76°52'W JOINT BASE ANDREWS (ANDREWS AFB) (KADW)

Amdt 2 18MAY23

TACAN RWY 19R

NE-3, 10 JUL 2025 to 07 AUG 2025