

CAMP SPRINGS, MARYLAND

TACAN RWY 19L

VORTAC ADW 113.1 Chan 78	APCH CRS 195°	Rwy Idg TDZE 279 Arpt Elev 280
--------------------------------	------------------	--

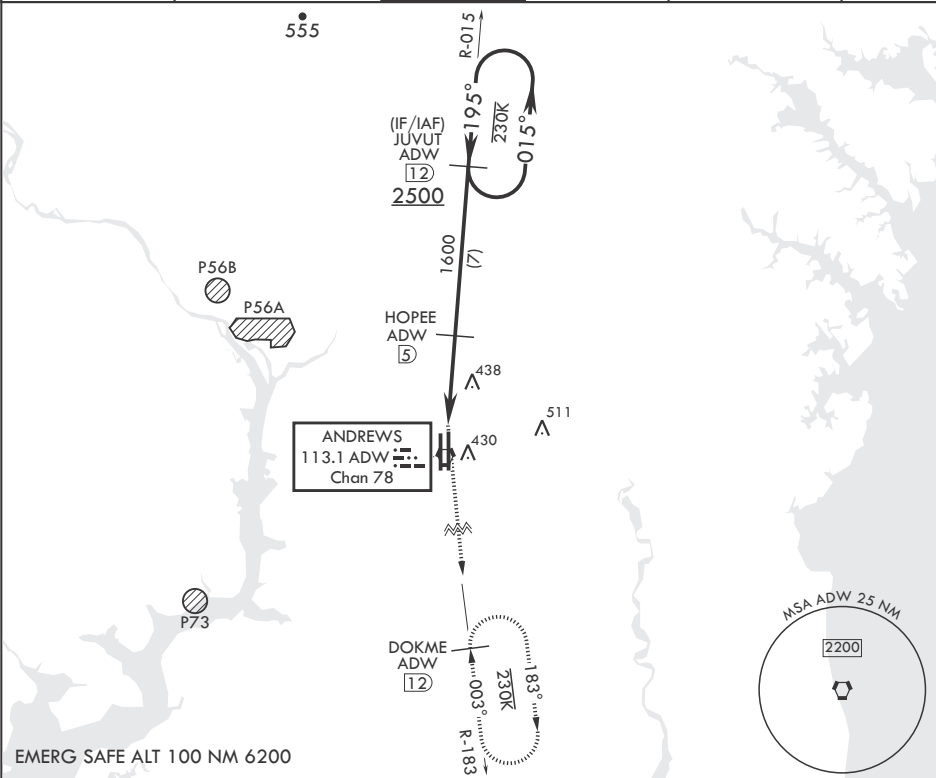
- (USAF)

JOINT BASE ANDREWS (ANDREWS AFB) (KADW)

RADAR required	ALSF-1
<p>▼ * When ALS inop, increase CAT AB RVR to 55, vis to 1 mile, CAT CDE vis to 1 3/8 miles. ** Circling not authorized W of Rwy 1L-19R.</p>	

MISSSED APPROACH: Climbing to 2500 via ADW VORTAC R-183 to DOKME and hold.

ATIS 133.675 251.05	POTOMAC APP CON 128.0 335.5	TOWER 118.4 349.0	GND CON 121.8 275.8	CLNC DEL 127.55 285.475	CPDLC
------------------------	--------------------------------	----------------------	------------------------	----------------------------	-------



2500 ADW R-183	DOKME ADW 12	JUVUT R-015 ADW 12	015°	2500	ELEV 280	195°	TDZE 279
ADW VORTAC	ISILE ADW 1.3	ADW 2.3	HOPEE ADW 5	1600	BCN 483	86 L	16 L
				3.7 NM	9318 x 200		
				3.02°	9756 x 150		
				TCH 56	0.3% DOWN		
CATEGORY	A	B	C	D	E		
S-19L*	740/24	461 (500-½)	740/50	461	(500-1)		
CIRCLING**	780-1	501 (600-1)	780-1½	501 (600-1½)	840-2	561 (600-2)	
						HIRL all Rwys TDZL/CL Rws 1L, 19R	

CAMP SPRINGS, MARYLAND

Amdt 3 18MAY23

38°49'N - 76°52'W JOINT BASE ANDREWS (ANDREWS AFB) (KADW)

TACAN RWY 19L

NE-3, 10 JUL 2025 to 07 AUG 2025

NE-3, 10 JUL 2025 to 07 AUG 2025