

WAAS CH <b>52205</b> W01A	APCH CRS 010°	Rwy Idg <b>9318</b> TDZE <b>261</b> Arpt Elev <b>280</b>
---------------------------------	------------------	--

- (USAF)

RNAV (GPS) Z RWY 1L

JOINT BASE ANDREWS (ANDREWS AFB) (KADW)

DME/DME RNP-0.3 NA
--------------------

**T** \* When ALS inop, increase RVR to 40, vis to  $\frac{3}{4}$ .  
When TDZ/CL lights inop, increase RVR to 24.  
\*\* When ALS inop increase vis to  $1 \frac{1}{4}$  miles.

ALSF-2

**MISSED APPROACH:** Climb to 2500 direct EGUDE and hold.

ATIS
133.675 251.05

POTOMAC APP C  
128.0 335.5

TOWER  
18.4 349.0

GND CON  
121.8 275.8

CLNC DEL  
127.55 285.475

CPDLC

\*\*\* When ALS inop increase CAT  
AB RVR to 55, vis to 1 mile;  
CAT CDE vis to 1 1/4 miles.

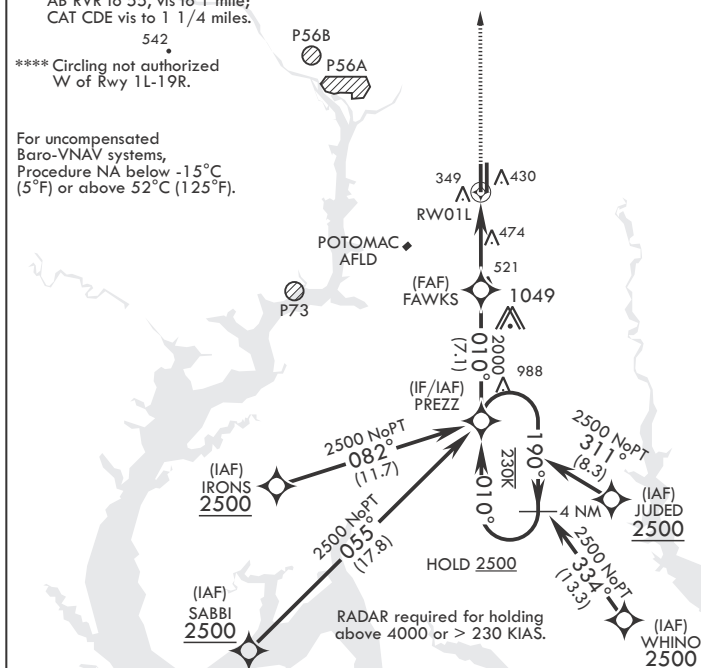
\*\*\*\* Circling not authorized  
W of Rwy 1L-19R.

For uncompensated  
Baro-VNAV systems,  
Procedure NA below -15°C  
(5°F) or above 52°C (125°F).

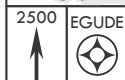
MISSED APPROACH
-----------------

HOLD 2500

RADAR  
required for  
holding  
above 4000  
or > 230  
KIAS.



EMERG SAFE ALT 100 NM 6200

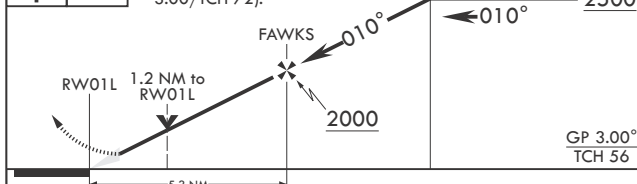


VGSI and RNAV glidepath not coincident (VGSI Angle 3.00/TCH 72).

PREZZ Holding Pattern

ELEV 280

E 261



CATEGORY	A	B	C	D	E
LPV DA*	461/18		200	(200-½)	
LNAV/VNAV DA**	687/40		426	(500-¾)	
LNAB MDA***	700/24	439 (500-½)	700/40	439	(500-¾)
<b>C</b> CIRCLING****	780-1	500 (500-1)	780-1½ 500 (500-1½)	840-2	560 (600-2)

